



AUCTION PRICE GUIDE

The latest farm vehicle and diecast toy results



COLLECTORS GAZETTE

July 2018 • Issue No 412 • www.ccofgb.co.uk • £3.50

AUCTION NEWS Tinplate sale flies

Rare vintage collection is a big hit at Vectis



Sold for £744

+ EVENT DATES

The UK's best guide to fairs in your area



» SPACE TOYS FROM THE 80s

Futuristic vehicles by three British manufacturers



» 0 GAUGE TINPLATE

Profiling the rise of larger scale trains

» BEST OF BRITISH

Looking at the history behind Charbens lead models



STARTER'S ORDERS

A day at the races with Britains Racing Colours of Famous Owners

SWAPMEETS

Find out what was on offer at recent events

ISSN 0957-6304



Display until 20/07/2018

WARRIERS GROUP LTD





Waterline ship models by Bassett-Lowke and others, from a very large and fine collection, also including aircraft models: first part to be offered in our auctions on 10, 22 and 24 July

We hold fourteen toy and doll auctions a year and are always taking in consignments for all our sales

Please contact Hugo Marsh, Daniel Agnew or Dominic Foster on + 44 (0)1635 580595 or hugo@specialauctionservices.com

81 Greenham Business Park, Newbury RG19 6HW

NEWS

IN-DEPTH

PRICE
GUIDEYOUR
HOBBY

CONTENTS

IN THIS ISSUE...

- 03 NEWS**
The latest news from the world of collecting.
- 05 MORE NEWS**
A round-up of stories from auctions, toy fairs and more!
- 12 SUBSCRIPTION OFFER**
Save money, get the magazine direct to your door and never miss another issue!
- 13 EASY AS ABC...**
Alwyn Brice takes you through the alphabet of vintage toys.
- 14 THE REBIRTH OF O GAUGE TINPLATE TRAINS**
In the first of two parts, Mark Nolan profiles the resurgence of larger scale trains made the old fashioned way.
- 16 UNDER STARTER'S ORDERS**
James Orwell has a day at the races with Britains Racing Colours of Famous Owners.
- 18 SPACE VEHICLES**
Mike Piggott looks at some futuristic space vehicles made by three British manufacturers in the 1970s and '80s.
- 20 BEST OF BRITISH**
Brian Howes looks at the story behind Charbens lead figures and vehicles.
- 22 INTRO TO...**
Retro Computers - technology from the days before the internet...
- 24 EBUILS**
Our guide to what's been selling well on eBay this month.
- 27 PRICE GUIDE**
Find out what your toys could be worth in our auction round-up.
- 34 AT THE CHALK FACE**
Alwyn Brice attended the latest venue for the London Toy Soldier Show.
- 36 SUCCESSFUL VINTAGE FAIR**
Ann Evans visited the recent Barry Potter fair in Rugby and got a history lesson on pre-War collectables.
- 42 EVENT GUIDE**
Plan your diary for the month ahead with our toy fair and auction listings.
- 44 OBSOLETE OZ**
What gems has Oz uncovered this month on his travels?
- 46 SALES & EXCHANGE**
Buy/sell collectables and place your wanted adverts.

» **Publisher** Rob McDonnell
robm@warnersgroup.co.uk

» **Editor**
Cathy Herron 01778 391167
cathyh@warnersgroup.co.uk

» **Group Key Account Manager**
Claire Ingram 01778 391179
claire.ingram@warnersgroup.co.uk

» **Multi Media Sales Executive**
Kristina Green 01778 392096
kristina.green@warnersgroup.co.uk

» **Marketing Brand Manager**
Nicola Lumb 01778 395007
nicola.lumb@warnersgroup.co.uk


» **Marketing Assistant**
Katherine Brown 01778 395092
katherine.brown@warnersgroup.co.uk

» **Advertising Production & Design**
Nicola Lock 01778 392420
nicola.lock@warnersgroup.co.uk

» **Head of Design**
Lynn Wright lynnw@warnersgroup.co.uk

Collectors Gazette is published monthly by Warners Group Publications Plc, The Maltings, West Street, Bourne, Lincolnshire PE10 9PH, England.

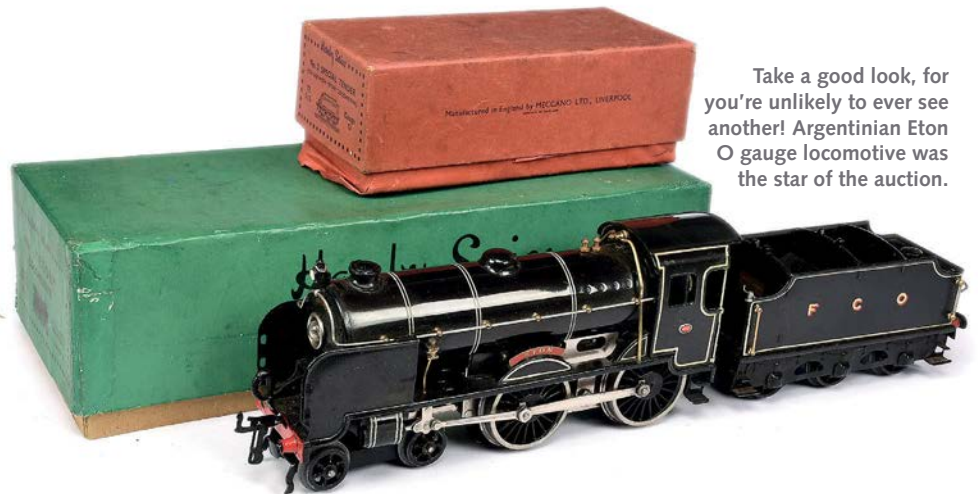
» **Newstrade Distribution**
This magazine is distributed by: Warners Group Publications Ltd
Tel: 01778 391150

 This publication is printed by Warners 01778 395111

DISCLAIMER The views expressed by contributors are not necessarily those of the editor and publisher. Every care is taken to ensure that the content of this magazine is accurate, but we assume no responsibility for any effect from errors or omissions. While every care is taken with material submitted for publication, we cannot be held responsible for loss or damage. No part of this magazine may be published without the prior permission of the publisher. While every care is taken when accepting advertisements, we are not responsible for the quality and/or the performance of goods and/or services advertised in this magazine or any unsatisfactory transactions. The Advertising Standards Authority (ASA) exists to regulate the content of advertisements. Tel: 020 7429 2222.

■ AUCTION REVIEW

Engine drives bidders loco!



Take a good look, for you're unlikely to ever see another! Argentinian Eton O gauge locomotive was the star of the auction.

Vectis had a rash of sales in April, with three back to back: one was general, one focussed on trains and the last was the John Gurney collection.

An unusual lot was the Mattel Man in Space Major Matt Mason: a partially unboxed group, it included Galisto and the Major Matt Space Station plus other items. Despite the box's absence, the original backing card was present. Fair to good plus described the contents but the estimate of £20- 40 was hammered, the lot selling for £312.

The star attraction was something that rarely comes to market: the Hornby O Gauge Argentine export E420 4-4-0 Loco and Tender FCO in black. The Eton came with No.900 applied, and was a 20v electric example. This example was gloss finished but exhibited some retouching along the running plate and the relining of the splashers,

and had overpainting to the inside of the cab; it was also fitted with a smokebox bulb holder. The tender featured FCO to the tender sides. In overall excellent condition, it was contained in an excellent E420 Eton box with internal end packing pieces; the tender was similarly packaged. Estimated at £3,000-4,000, it finally settled on £4,560.

The Hornby O Gauge "Colas" Bitumen Tanker was small beer by comparison, but desirable nonetheless as it was a version with a red tank and black base. In excellent shape, this rolled away to realise £360. In a similar vein was the Hornby O Gauge SR pink Refrigerator Van. Boasting large SR lettering to the van sides, it too was excellent and was contained in an early box with an SR label to one end. A chilled audience soon grew warm, and the van finally sold for a creditable £1,200.

But it's not just locos and rolling stock that sell these

days: the Hornby O Gauge No.2E Signal Gantry was a case in point. A late home version with a green base and red finials, it was near mint in an excellent box. Its upper estimate was a strong £600 but enough people wanted it to chase it all the way to an amazing £2,520.

The last sale featured many interesting Brooklin miniatures. One notable example (or rather examples) was No.BRK53 1955, the Chevrolet Camino Pick-up set of eight trial colour issues. This was specially produced by Brooklin models as a one-off set and, as such, represented a unique opportunity for someone to acquire the lot. Colours included red, sea-green, yellow, navy blue, off white, cream, grey and light blue. Generally mint in excellent cream boxes and with with correct paperwork, the guideline of £300-400 was rapidly eclipsed, the set making a stunning £6,480. ■



SUBSCRIBE TODAY
FOR £7.99 PER QUARTER
Save time and money • Never miss an issue
Turn to page 12 to find out more...

■ AUCTION REVIEW

Sail sale at Wallis & Wallis

Proof that you don't have to hang out at the big auctions to find good collectables was certainly evident in the recent Wallis & Wallis sale. Just over 1,300 lots were consigned in April and of great interest was a number of beautifully built 1800s sailing ships. These were simply exquisite in wood: some were scratchbuilt, some were from kits, but all impressed, with the biggest reaching a length of 1150 mm. This was the famous tea clipper, the Cutty Sark: that carried an estimate of just £200 but the stars of the show, expected to make up to £500, were the 104 gun model of HMS Victory and the French Napoleonic 64 gun man o' war. This latter sailed into expectation to realise £420.

Ships apart (and I have to say that these seemed terrific bargains, given the level of workmanship), a couple of locomotives stood out in the railway section, which was, as ever, densely populated with engines, tenders, rolling stock and other accessories. The gauge one Deutsche Bundesbahn DB Class BR65 2-8-4T loco by Kiss Modelbahnen was simply stunning – there was no other word for it.



French man o' war sailed off to a new home for under £500

A companion piece in the same scale was also included in the sale (a Prussian State Railways Class P8 4-6-0 loco and tender). Both were guidelineed at £1,500-2000: the German model finally stopped on the tracks at £1,300.

Moving on to lead figures, the auction carried a good number of boxed Britains sets, some very early, as well as several lots of Trophy Miniatures boxed sets and a number by Tradition. Amongst the Britains (the most sought after lots) was an interesting set of camel riders: the Types of the Indian Army (Bikanir) was arguably a 1930s set and contained three riders with their rifles resting on their

thighs. Very exotic, this lot made £120, which was spot-on in terms of estimate. Another interesting set, that of the Royal Marine Light Infantry, realised £440. The real treasure, though, had to be the scarce Britains civilian set; dating from 1908, here was real quality, despite the chipping that was noted. A Fred Whisstock box set off this delightful period evocation of eight different models, which certainly won over the bidders: it closed on £700, way over the upper estimate of £200. And finally, for all those who collect model car accessories, a good boxed set of roadsigns by Gilco was pursued to £90. ■

■ AUCTION REVIEW

Stringing together a bargain

The 7 May Trains, Planes & Automobiles auction, from Down Under, once again went to prove that not everything collectable is mint and boxed – and neither is it necessarily with a huge price tag attached. A large number of lots went under the hammer, with something for everyone – literally.

The Pelham wooden Skeleton puppet was typical of the fare. Around 300mm tall, its pieces fly apart and reunite (when in skilled hands, that is). Somewhat tangled, with a few parts detached, it needed a little work but appeared to be complete. A Spot-on catalogue (3rd Edition) also turned up, as did two Scalextric vehicles, to wit a Vintage Sports Car and a Motor Cycle with Sidecar. Both were poor but a guideline of AUS\$100-200 was noted.

The Winna WV526 Bakelite car, in dark brown, was much better. At 188mm long, this was the version without a clockwork motor. Winna remains a popular brand in Oz and this example eventually made AUS\$380. One of several made-up models offered, a pretty 1/72 scale RN Fairey Gannet had been (professionally?) built from

a kit, and had been superbly painted and detailed. In excellent condition, it sold for AUS\$80. It's interesting to see that unmade kits are not always the ones to look out for.

Totally different was the Venice Simplon-Orient-Express Souvenir Sheaffer fountain pen. With silver lattice overlay and 18K gold nib, it came with two unused cartridges and a refillable converter. Described as very good, in a very good silver-plated presentation box, this carried a lowly estimate of AUS\$40 but enough train buffs were bidding to propel it to AUS\$130.

Remember the yo-yo craze? These toys are still about, of course, but the shop display box of 12 Russell Professional Coca-Cola Yo-Yos, finished in red and white (what else?), came with five packets of spare strings. As new, in a good box, this novel set sold for AUS\$14.

Another popular make in Australia is Micro Models – and the GB/12 Talbot-Lago racing car, finished in green, was a good example of the genre. Some slight paint loss in certain areas was flagged up but its estimate AUS\$80-160 proved rather too modest, the car accelerating away to achieve AUS\$200. ■

**NEW RELEASES
THIS MONTH**

HELJAN RUSTON & HORNSBY/BR CLASS 07 0-6-0

Price: £139.95 Scale: 00 gauge Release: out now
Arriving with local stockists are Heljan's Class 07 diesel shunters. Delivered to BR Southern Region in 1962 as a replacement for the USA tanks, their short wheelbase made them particularly useful for negotiating the many tightly curved dock lines.

» www.heljan.dk



LOCOMOTION MODELS

STIRLING SINGLE 4-4-2 NO. 1

Price: from £179.00 Scale: 00 gauge Release: out now

On its way to Locomotion Models are models of its exclusive Stirling Single. Toolled by Canadian manufacturer Rapido Trains Inc. and working in close collaboration with the NRM, owner of GNR Stirling Single No.1, the 00 gauge models are the latest to be added to the National Collection in Miniature range.

» www.locomotionmodels.com

NEWS

IN-DEPTH

PRICE
GUIDEYOUR
HOBBY

■ AUCTION REVIEW

Boots display a real tonic

The Vectis 26 April TV & Film auction carried much of interest to *Star Wars* buffs but aside from the more usual (and certainly not cheap!) carded figures, two very interesting lots surfaced.

The Palitoy *Star Wars*/Boots The Chemist *Return of the Jedi* 1983 promotional

cardboard store display was, to say the least, highly unusual. On one side it was printed with the film's details whilst on the rear, the rather less prosaic rubric "Boots - so much more to value" was inscribed. Suffering edge wear, creasing, tears and some dings, as well as surface scratches, it was only classed as fair plus to good.

The vendor, 12 at the time, apparently saw the display and asked the store what became of such merchandising. On being told that the items were usually binned, the vendor then asked if it could be passed over when the time came

Someone had the foresight to bag this cardboard advertising item from Boots back in 1983: it might well be unique.

for its disposal. Name and address were given and the vendor dutifully turned up on an agreed date to bag the prize. A perspicacious youth, without doubt, who mentioned that another example was not known. Estimated at £1,200-1,500, it realised £1,800.

Rather scarcer was the *Star Wars* original movie poster acetate transparency dated and signed 1977. It came with a letter of authenticity from the vendor and a Notarised LOA from the California Jurat. Created in 1977 by artist Bill Selby and submitted to George Lucas at 20th Century Fox Studios, Lucas used the acetate in the approval process for what is now the rarest of all *Star Wars* movie posters. At 8.5" x 11" and matted to 11" x 14", Selby's acetate was

just one example of his work. A famous cover artist, he was well known for his *Star Wars* paintings and *Famous Monsters* covers. Definitely one for the connoisseur, this little gem soared away to make £3,600.

Another lot of note was the Kenner *Star Wars: The Empire Strikes Back* vintage Cloud City Playset. Graded at 75%, it was open but with sealed contents. With an outer case in excellent condition (save for some minor scuffs), this lot was estimated at £400-600 but on the day was pushed to £1,020. ■



This unusual acetate transparency for the coveted *Star Wars* film poster had the necessary provenance and sold well.



■ AUCTION PREVIEW

Lledo hits Aston's

Aston's Auctioneers will be offering for sale the collection of a former senior manager at Lledo. It is believed there are around 10,000 models in the collection, amassed mostly during the 1990s. The first part of the collection, mainly Days Gone and

Promotional models, will be sold on 5 June.

The second part of the collection, to go under the hammer on 10 July, is made up of prototypes and pre-production samples. Aston's are still in the process of sorting these, but so far in excess of 300 of these models have been found, many from the popular Vanguards

range. The models are made from resin, plastic or metal and include some variations that you may recognise, and others that were never to be released. The collection also includes hand drawn boxes and catalogue art work.

Speak to the auctioneers, it's been good fun sorting through such a thorough and comprehensive collection.



The US Army lot, pictured, includes various designs for the box and the models, as well as the final product (which includes the limited

edition certificate, numbered '0001'). It's great to see the evolution of the set and gain a little insight into the design process. ■

For more new releases visit our website...
cofgb.co.uk



**BACHMANN BR MK1 BG RE-RAILING TOOL VAN (R3582)
87010 KING ARTHUR INTERCITY LIVERY**

Price: £47.95 Scale: 00 gauge Release: out now

Mickleover Model Railway Group's second OO gauge limited edition model has a Scottish connection, a BR Mk1 BG in engineer's yellow with black chevrons. Tooled by Bachmann, the models will depict ADB 977155QRV, with Highland terrier motifs of Glasgow Eastfield depot.

» www.mmrg.org.uk

DID YOU KNOW THAT YOU CAN FIND US ON SOCIAL MEDIA?



www.twitter.com/CollectorClubGB



www.facebook.com/CollectorsClubOfGreatBritain/



www.instagram.com/ccofgb

■ AUCTION REVIEW

Road and rail at Warwick sale

Warwick and Warwick's May auction realised £198,087: yes, toys are still big business! Diecasts, model soldiers and other toys went under the hammer, and there was plenty to tempt the railway buff, too.

In the real steam section an unusual Mamod Steam Roadster (No. SA1) realised £96 but as usual, it was the O gauge section that stole the show. An ACE Trains Class A5 Pacific 4-6-2 LNER 2510 "Quicksilver" No. E/4 locomotive and tender sold for £408 but that was eclipsed by a lovely Bassett-Lowke LMS Princess Coronation Class 4-6-2 BR 46232 "Duchess

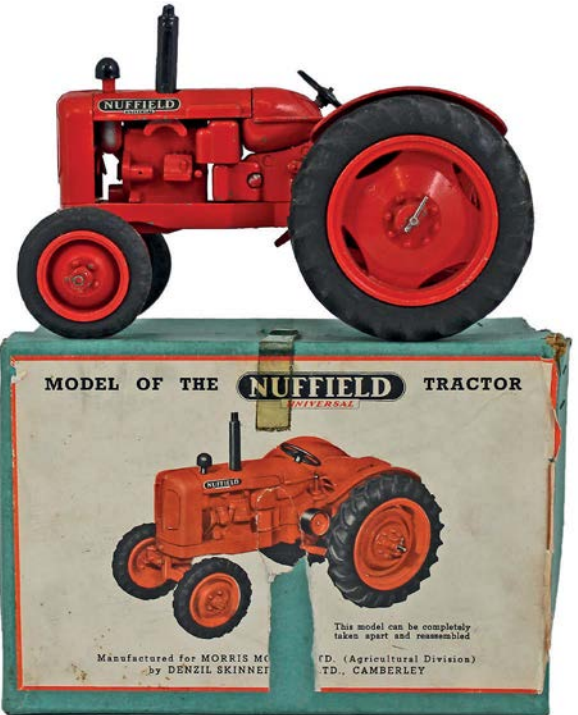
of Montrose" that achieved £1,020.

A Bing "Royal Scot Passing through Wembley" clockwork set was a little different and this set realised a very respectable £480.

Meanwhile, in the OO gauge section, there was an impressive and extensive collection of Wrenn locomotives offered. Highlights included a Royal Scot 6P 4-6-0 Class LMS 6141 "Caledonian" locomotive and tender (No. W2293), which sold for a creditable £720. Elsewhere, a Duchess 8P 4-6-2 Class BR 46221 "Queen Elizabeth" No. W2299 locomotive and tender achieved £480, while a streamlined Coronation 4-6-2 Class LMS 6244, the "King George VI" No. W2302

locomotive and tender finally stopped at £480. Finally, an A4 Class 4-6-2 LNER "Woodcock" (No. W2283) locomotive and tender fetched £840.

Leaving rail, what about the fabled James Bond Scalextric pursuit set? One went under the hammer and was in good condition. With evocative box art, this is always worth looking out for and it realised £960. Tinplate also performed well on the day, with a Wells-Brimtoy O gauge Cinderella Railcar set sold for £324. Cinderella in a train? You had better believe it... Also up for grabs was an Unique Art Manufacturing Company (US made) Li'l Abner and his Dogpatch 4 Band. A tinplate clockwork novelty item, this oddity



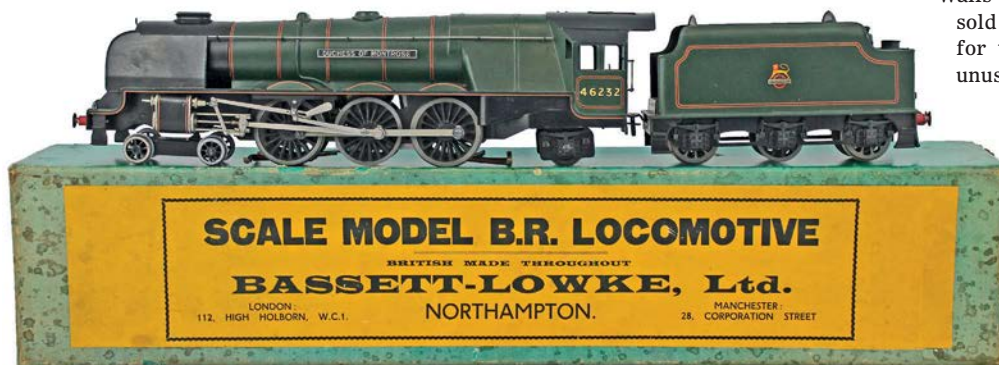
A lovely example of the ever-popular Nuffield tractor, showing only minimal wear.

achieved £192.

Diecast section highlights included the ever-popular Corgi James Bond Aston Martin DB5 No.26, which realised £144 and a Corgi Walls Ice Cream Van, which sold for £300: just in time for the summer rush? An unusual Denzil Skinner & Co. Nuffield Universal Tractor was bid to £372. This tractor is highly collectable when complete, and isn't often found on the auction circuit.

Nostalgia in the form of a Dinky pre-war

Petrol Station (No.480) stirred memories for some in the room and this interesting set realised £372. But modern models also proved popular in this sale. Examples included an Exoto (Grand Prix Classics) 1/18 scale Lotus Ford Type 72D John Player Special racing car, which sold for £156 and a CMC 1/18 scale 1960 Maserati Tipo 61 Birdcage (No. M-047) racer, which achieved a useful £132. Finally, a Minichamps Michael Schumacher Ferrari F310/2 representing the 1996 Italy GP car, in huge 1/12 scale, was an eye-ful - and it realised £120. ■



Bassett-Lowke fans weren't disappointed - and got steamed up over this Duchess of Montrose.

**NEW RELEASES
THIS MONTH**

AVIATION 72 DHC1 CHIPMUNK IRISH AIR CORPS 168

Price: £34.99 **Scale:** 1/72 **Release:** out now
Another livery on Aviation 72's pretty Chipmunk casting. Very nicely applied decals show off this aircraft's attractive lines.

» www.clevelandsdiecast.co.uk



KING AND COUNTRY DOING BUSINESS

Price: \$99

Release: out now

Hong Kong is a great port and trading city and merchants come from far and wide to do business here. This is just one example... A Chinese businessman discusses a 'deal' with a visiting Malay trader.

» www.kingandcountry.com



SOLIDO 1974 VOLKSWAGEN BEETLE 1303

Price: £49.00 **Scale:** 1/18

Release: out now

Smartly finished and featuring very cool 'sidewinder' stripes. Correct wheels for the year and overall very good proportions.

» www.amerang.co.uk





NOTTINGHAMSHIRE'S PREMIER HOME FOR VINTAGE TOYS, MODELS & GAMES

We **BUY & SELL** model kits, action figures, diecast, tinsplate & clockwork, dolls & bears, trains, games & more.

Order by phone, at our website or visit our shop in Edwinstowe for a friendly professional service

COLLECTION TO SELL? JUST GIVE US A CALL, BEST PRICES PAID.

www.dtcollectabletoys.co.uk
 01623 822463 • enquiries@dtcollectabletoys.co.uk
 Suite 2, Church Farm Business Centre, Mansfield Road, Edwinstowe, Nottinghamshire, NG21 9NJ



Duke Collectables
 "Your nostalgia is our pleasure"

Vintage Diecast Models Bought & Sold.
 Corgi, Dinky, Matchbox, etc.

Cash Paid for items bought & will travel nationwide.

View our items for sale in our **Ebay Shop** and see us at major **Toy Fairs**

Tel: 07951 886814
 dukecollectables@virginmedia.com
<http://stores.ebay.co.uk/dukecollectables>
 Hemel Hempstead, Hertfordshire

ALL RISKS COVER FOR COLLECTABLES
 Stamps, Postcards, Coins, Diecast Models, Dolls Houses, Teddy Bears, etc...

Write or Telephone for rates

STAMP INSURANCE SERVICES
 (Dept 12CG) C G I Services Limited 29 Bowhay Lane, Exeter EX4 1PE Tel: 01392 433 949 fax: 01392 427 632
 Authorised & regulated by the Financial Conduct Authority 300573
www.stampinsurance.co.uk

Carkits and TV Toys.
 1000'S OF MODEL CAR KITS & TV MODELS Including AMT, Airfix, Aurora, Monogram, MPC, Revell, Tamiya and Slot Car spares. RTR, bodies, kits, sets and more.

For Carkits/TV/Slot lists send a cheque for £5.95 or any lists available by e.mail/pdf doc on request.
 101 Kensington Road, Southend-on-Sea, Essex, SS1 2SY, England. Tel: 01702 615397
 e-mail: robert.dobinson@btopenworld.com

Cheques/P.Orders payable to R. Dobinson.

COLLECTAKIT
 35 Chapel Ave, Addlestone, Surrey KT15 1UH (evenings only - we are not a shop)

Buying and selling Obsolete Plastic Kits
 If you are not on our FREE mailing list, a large stamped addressed envelope will bring you our latest list. Alternatively ring us in the evening. We have also published 'The Enthusiasts Guide to Airfix Models' available only from the above address.

01932 840766 / sales@collectakit.co.uk

TRAIN & TOY AUCTIONS
 Auctions every month

Visit antiquetoys.com.au for details of our next auction

- Live bidding online
- Absentee bidding by email, phone or web

TRAINS, PLANES & AUTOMOBILES
 Purveyors of antique toys since 1987



see us at Sandown Park stands B42-43

Collectable TV and film related toys from the fifties & sixties, tinsplate & diecast, motorsport

Collectable British and European early 20th century vintage lead miniature toys

Corgi • Dinky
 • Captain Scarlet Thunderbirds
 • Stingray Tinsplate • Dr Who
 • Motorsport Memorabilia

Britains • Johillco • Timpo
 • Charbens • Phillip Segal
 • Crescent • Sacul • Salco
 • Luntoy • Pixyland Kew
 • Taylor & Barrett

www.vintageboystoys.com www.lilliputworld.co.uk

AMJO BOXES

11 Montford Mews, Hazlemere, High Wycombe HP15 7FR

BRITISH MADE CLEAR PLASTIC DISPLAY BOXES FOR ALL YOUR COLLECTABLES

FOR MORE DETAILS CALL 07768 726643

Email: capri.amjo83@gmail.com www.amjoboxes.co.uk



Andrew Clark Models
 Est. 1981 COLLECTORS TOYS

WANTED
 All Diecast, Tinsplate and Trains

Many auction prices beaten
 Anything considered, will collect
 Travelling Countrywide weekly
 Large collections a speciality
 Established in 1981

andrew@andrewclarkmodels.com
 Call: 07753 804232 or 01756 793354

Or post list to:
 Andrew Clark Models
 Unit 1, Toller Court, Shortbank Road, Skipton,
 North Yorkshire, BD23 2HG

TOP PRICES PAID FOR:
 Dinky
 Corgi
 Matchbox
 Spot-on
 Tin Plate Toys
 Britains
 Trains
 White Metal
 Minichamps
 Polistil/Burago
 Quality 1/18 Scale
 Plastic Kits (Airfix etc)
 Modern Collectables



MINIATURE AUTOWORLD

WANTED!

Cash waiting for collections of:

- Corgi
- Dinky
- Britains
- Brooklin
- Matchbox
- Spot-On
- Tekno
- Conrad/NZG
- Scalextric
- White Metal/Resin - kits or built
- European Diecast
- Metal Soldiers



Large collections - small collections - surplus stock

We are regularly travelling throughout the UK & Ireland and can visit you at your convenience.

Please telephone Andrew or send lists via post or email to:
 Andrew Sutton, Miniature Autoworld, PO Box 85, Ilfracombe, Devon, EX34 8ZW.

Email: miniature-autoworld@outlook.com
Phone anytime: 01271 864061 or 07515 743152

■ AUCTION REVIEW

Banks for the memory!

Over the weekend of June 2-3, the RSL Auction Company offered the collections of two legendary pioneers of the antique toy and bank hobby: Tom Sage Senior and Dr Gregory Zemenick, widely known in the trade as Dr Z.

The Saturday session began with no fewer than 175 cast-iron mechanical banks from the Sage collection. Then, following a short intermission, the spotlight was on Dr Z's 300 lot assemblage of mechanical, clockwork and early American tin toys; in addition were antique tobacciana and cast-iron novelties. Sunday's session opened with 130 lots of highly important German hand-painted tin toys and Lehmann wind-up toys, many of them boxed, all

gathered from a fine private collection. Dr Z's wonderful cast-iron still banks were auctioned later.

Whilst cast-iron banks are virtually unknown as a collectable area within Europe, in the US it's a very different story indeed – and such is the interest that huge sums can change hands for particular examples. Many are three dimensional comments on American social history and, as such, evoke great feelings of nostalgia. Amongst the choicer items that were due to go under the hammer was a Mikado bank, estimated at US\$120,000-160,000, and one of perhaps ten known to exist. Also featuring were a circa 1907 J. & E. Stevens Clown, Harlequin & Columbine bank (in all original condition), estimated at US\$90,000-120,000; five colour variations of the "Mummy" bank in

virtually pristine condition; a superb Squirrel on a Stump mechanical example and a near-mint Two Frogs bank. A Kyser & Rex Merry-Go-Round bank was purchased at a small estate auction in New Jersey many years back by the vendor and this was expected to fetch an eye-watering US\$80,000-100,000. And for those with a belligerent bent, how about an excellent Confederate version of the Artillery bank?

On the tinsplate and toy front, the highlight was arguably a George Brown non-clockwork Monitor ship that was tagged at US\$15,000-20,000. Of the 67 German made Lehmanns set to cross the auction block, an amazing 50 retained their original boxes. Mint and boxed treasures included a coveted Boxer Rebellion (US\$18,000-25,000); a Lo &



Little Red Riding Hood has clearly tamed the wolf since I last read the fable: this example by Gunthermann was wonderful.

Li (US\$7,500-9,500); and a Ski Rolf, put at US\$6,000-8,000. Gunthermann tinplate was also represented: an extraordinary, articulated, Little Red Riding Hood and Wolf was expected to make

US\$7,500-9,500 while an equally flawless example of The Maypole Dancers (the only example RSL Auction's owners have ever seen) could go to US\$7,000-9,000. ■



■ The Specialist and Tinplate Toy sale held at Vectis on the 15 May featured six private owner collections, including the second part of the The Hartley Clark Collection – a selection of boxed and unboxed cars, motorcycles, vans, trucks and other vehicles from Politos, Dinky and Mercury. The Melida Collection had 26 lots of Dinky trade box sets and vehicles, and The White Metal Racing Car Collection featured 12 lots from TW Collection (Trevor Wright Models). The sale also included the fourth installment of the John Gurney collection, a large selection of Lansdowne and Brooklin models. A large section covering tinplate and plastic included German, French and UK novelty toys and automata, plus FROG aircraft, Tri-ang catalogues, Victory

Industries plastic models and racing sets and a KT Toys Liliput Robot.

Lot 736 was a Crawford's Biscuits "Pride of London" tinplate airliner shaped biscuit tin. This was a scarce example in a metallic gold finish, with tin-printed detail and A-ONE registration number. The bi-plane wings were made to fold lengthways with a folding tail plane and rear wing section for storage. The model was marked on top with a "Royal by Appointment" crest, it lacked half of the front propeller but did include the wheeled undercarriage and rear jockey wheel. Even with some age related wear, overall it was a good example for display and realized an impressive £744.

NEW RELEASES THIS MONTH

EFE BET AEC RELIANCE SOUTH YORKSHIRE PTE

Price: £29.99 Scale: 1/76

Release: out now

Nice coffee and cream livery on EFE's improved BET AEC Reliance casting. It depicts 336 NKT on route 256 heading to Killamarsh.

» www.bachmann.co.uk



WIKING DEUTZ D 40 L TRACTOR

Price: £9.00 Scale: 1/87 Release: out now

Moulded in plastic Wiking's D40L tractor has good levels of detailing. There's also a rear hitch for towing trailers.

» www.wiking.de



KING AND COUNTRY D-DAY COMMANDERS PLANNING GROUP

Price: \$199.00 Release: out now

Gen. Dwight D. Eisenhower commanded a team of many of the best Allied military leaders of WW2 among them were... Air Chief Marshal Sir Arthur Tedder, General Omar Bradley, General Bernard Montgomery and Admiral Sir Bertram Ramsay. All of whom are included in this set.

» www.kingandcountry.com

■ EVENT NEWS

Fair steams back into Cardiff

A regular collector's bonanza reaches Cardiff again shortly when Wales' largest toy and train sale arrives at Penarth Leisure Centre at Cogan, on Saturday 7 July. This will be the third such Cardiff event of 2018 and a further date is already booked for October of this year.

Organizer Chris Dyer told us this week: "Our venue at Cogan is ideal for a toy and train sale being large, easily accessed from all areas and most importantly, has Cogan Railway Station virtually next door. Many of our customers make the most of

the frequent and reasonable train services, from so many departure points".

"We now offer in excess of 120 tables at the Cardiff show, and these are operated by more than fifty traders from all over the UK. The stock on offer, both old and new, is quite unbeatable in quality and quantity as well as being wonderful value-for-money with prices to suit all pockets".

The Cardiff show is now firmly established on the national scene and traders travel from as far away as the North East of England, East Anglia & Cornwall as well of course, from much closer to home.

Traders present on the day will be buying as well as selling and exchanging, and will also happily offer free valuations on a wide range of toy and train related items. They welcome items being brought in for cash or exchange, so do raid your attic, dust-off your treasures and bring them along! As always, refreshments will be available within the sale and the warm and happy environment, the superbly lit hall, all help to add to the occasion.

More details can be found at www.chrisdyerfairs.co.uk or by calling Chris on 01643 702757 or 07966 694579. ■

■ EVENT NEWS

25 years of model railway exhibition

The Friends of Robert Barclay Academy will be holding its 25th annual model railway exhibition soon. The event held on 14 July will see more than 21 layouts, some of which have never been seen before in Hertfordshire.

Trade stands will include those selling new and second-hand model railways, vehicles and accessories, as

well as books, DVDs, scenery materials, kits and tools. Alongside the trade stands will be several Society, club and demonstration displays, so there will be plenty to keep you occupied.

Layouts on display will cover N and 00 gauge, Tri-ang 00, Hornby Dublo 3 rail and 0 gauge. For younger enthusiasts there will even be an exciting Legoland layout!

Held at the Robert Barclay Academy in Hoddesdon (EN11 8JY), the doors will be open between 10.30am and 4.30pm. Adult entry will cost £4.50 with concessions available. All profits from the event will go back to the Academy for projects within the school.

If you would like more details please contact Exhibition Manager Joe Lock on 07866 641215. ■

My month

Auctioneer and television presenter **Tim Weeks** tells us what he's seen and what he has been getting up to this month.



My highlight of May was filming *Bargain Hunt* in Edinburgh. I remember receiving the news earlier this year that I was going to be at the Edinburgh Antiques & Collectors Fair and I was so excited to get the opportunity to visit the city - a city that I have never had the pleasure of visiting before. When I told my friends and family of the news I could see the envy in their eyes that I was going 'abroad' with the BBC to film and man, I couldn't wait to mix business with pleasure. I imagined arriving early the day before filming began so that I could explore the city and popping to lovely restaurants in the evenings after filming was completed. Well, reality can be harsh. I was staying at an airport hotel and the collectors fair was located a 4 minute drive from there. I still haven't been to Edinburgh. The best view of the city I got was of an airport car park...

Back at 'home' I have been looking at a lot of 1980s toys that have been coming into the auction house and they really are going from strength to strength, aren't they? While I am also a toy traditionalist that loves tinsplate, diecast and model railway, I am a child of the 80s and 90s and the toys of this era really tug at the heart-strings. I can't help but get excited looking at *M.A.S.K.* vehicles or *Masters of The Universe* figures and it's clear the prices for these items are still on the rise. I happened to be having a clear out of my garage at home over the Bank Holiday weekend and I found a *Millers Guide on Toys* from roughly 15 years ago. It's a great way of seeing how the market has changed during this time when a reference guide known for its over pricing of items is on many occasions under pricing these toys by hundreds of pounds. It was good fun to have a flick through that book and couldn't help day dreaming about still being able to pick up a few of those figures at the prices listed.

I want to end on a slightly contentious thought I had while comparing the toys from past generations to the future of collectable toys that my young children may be collecting in 30 years time. I think there is a definite chance that eBay is going to kill the future of toy collecting. There used to be one way to buy a toy - when it was on the shop shelves. Once that toy was no longer produced or sold its gone forever. You can't find it. Then there became a second way to buy toys - via online stores. It's the same principle, when the toy line is stopped, you can't get it. A collector would have to rely on maybe finding something at a car boot sale, vintage fair or items coming to auction. I believe eBay also ruins part of the fun of collecting...The Hunt, the chase. Let's be fair, I could start and finish a collection of almost anything in a few weeks thanks to eBay (if I had bottomless pockets). Where's the fun in that. Everything is available. So, if five years after the Teenage Mutant Ninja Turtles were taken off the shelves in the early Nineties and I looked to try and buy them, I don't think I could find any, well it would certainly be hard. The toys would seem to disappear for a number of years before the generation grows older. In comparison to my son who likes Pokemon and Ben 10, thanks to eBay I can get almost any figure from the past lines of these brands. So if they're always available, will their price appreciate in the way that toys of the last 80 years have? Only time will tell. ■



HORNBY (R3634) SR LORD NELSON CLASS 4-6-0 851 SIR FRANCIS DRAKE AND 30863 LORD RODNEY

Price: £169.99 Scale: 00 gauge Release: out now
On sale now are Hornby's newly-tooled SR/BR Lord Nelson Class 4-6-0 locomotives. Era three modellers of the Southern Region should find its model of 851 Sir Francis Drake (R3634) of interest, whilst later BR-era modellers should look to its model of 30863 Lord Rodney (R3635).
» www.hornby.com

MEDICOM TOY COMPANY ROBOCOP 2 MIRACLE ACTION FIGURE

Price: £120.99
Release: Spring 2019
Japan's acclaimed Medicom Toy Company delivers their Robocop 2 Miracle Action Figure. This hyper-articulated figure comes packed with multiple hands for action poses.

» www.forbiddenplanet.com



July 2018 Sale Dates

Tuesday 10th - TV & Film Related Sale

Wednesday 11th - Specialist Diecast

Thursday 12th - Specialist Diecast

Thursday 19th - General Toy Sale

Friday 20th - Model Train Sale

Auctions held at Thornaby Auction Rooms

Dates are correct at time of print but are subject to change
Please check our website for updates



Vectis Head Office - Fleck Way, Thornaby,
Stockton-on-Tees, United Kingdom TS17 9JZ

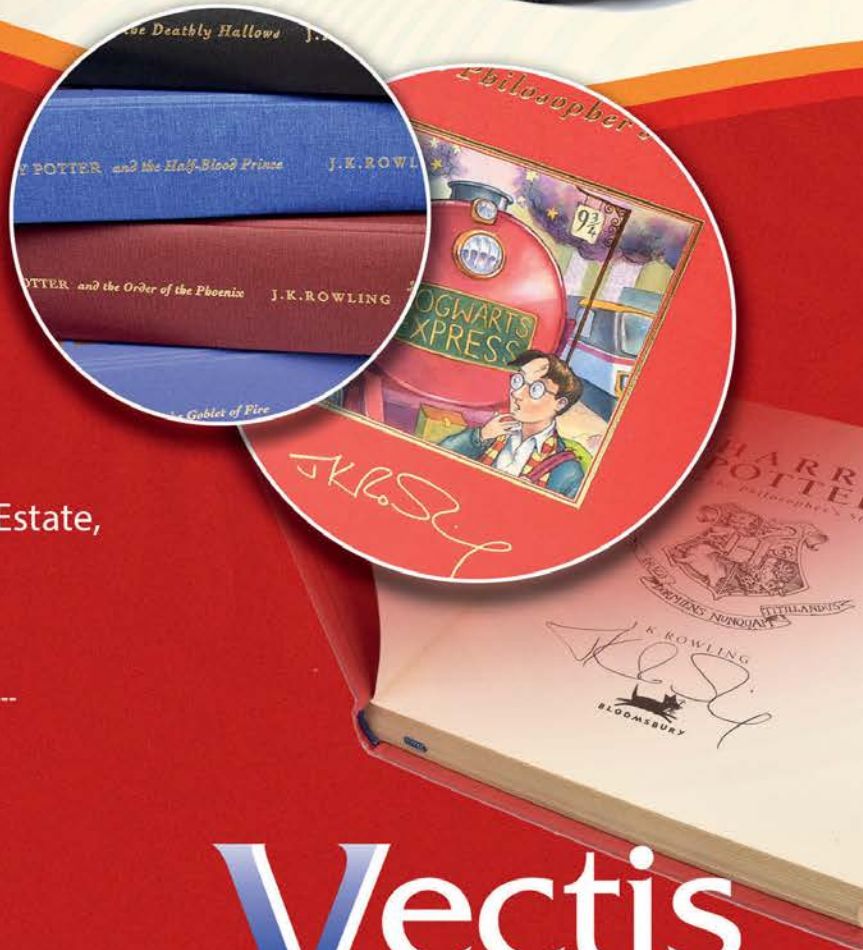
TEL: 01642 750616

www.vectis.co.uk

e-mail admin@vectis.co.uk

Oxford Office - Unit 5A, West End Industrial Estate,
Witney, Oxon, United Kingdom OX28 1UB

Tel: 01993 709424



 **Bid Live**

at **www.vectis.co.uk**

& **www.invaluable.com**

The World's Leading Toy Auction House

Vectis
AUCTIONS LTD
COLLECTABLE TOY SPECIALISTS

■ HOBBY NEWS

Airfix Vintage Classics kits



Since Airfix came onto the market in the early 1950s it has excited and entertained generations of young boys and girls, who have then carried on with a passion for the brand throughout their lives.

During these decades of modelling, Airfix has produced hundreds of models, across many different categories, and the majority of these tool moulds still exist today. As a result the company

plan to make many of these available again of the coming months. Not all will be possible, but it'll certainly come back with some old favourites and nice surprises along the way.

These 'new' Vintage Classics will contain kits from the pre-Hornby era; i.e. those not designed in CAD, and will carry, where possible, an older classic illustration. The box will include the year that the kit first appeared, plus carry the modern Humbrol colour references. Therefore

these Vintage Classic items will sit alongside the 'new' era items and make it far easier to choose the one you want without any confusion on what period of Airfix's history it comes from.

Airfix admits that many of these models are a little more challenging for today's modellers, but that's part of the fun. With some wonderful 'only produced by Airfix' items to come, the excitement is really building... watch this space for more details. ■

COLLECTORS GAZETTE

NEXT MONTH

AUGUST 2018 ISSUE



» FRENCH TINPLATE CARS

We look at a selection of Joustra toys and vehicles from between the 1930s and 1980s.

» INTRODUCTION TO...

Postcards! All the information you need to start your brand new collection.

» PRICE GUIDES & EVENTS

Your one-stop shop for all the essential info you could need.

On sale **20th JULY**
www.collectorsgazette.co.uk

*Editorial contents may be subject to change where necessary



■ An extremely rare late 17th century doll, just 14cm in height, has sold in Tennants Auctioneers Antique and Vintage Costume, Textiles and Dolls Sale for £9,500 (plus buyer's premium).

The little doll was made from carved wood, with a painted face, inset glass eyes and she wore a printed cotton dress. Despite having lost a hand and suffering minor wear and chips to her chin, she was in surprisingly good condition for her age. Six competing phone lines, as well as internet bidders, helped push the price of this modest-looking doll far above the original

£400-600 estimate.

Overall the rest of the sale saw strong bidding, with a number of other high prices being achieved. Two early 20th Century Chinese Summer Gauze Robes sold for £3,300 (plus buyer's premium), and a George III Needlework Sampler sold for £2,300 (plus buyer's premium). The sampler was worked by Frances Clark, and was dated 16 December 1819; featuring a scene of Adam and Eve between religious verses, what was more unusual was the naïve but naturalistic scene of a farmyard and houses with a horse, chickens and trees.

NEW RELEASES THIS MONTH

KING AND COUNTRY THE APACHE SCOUT

Price: \$129.00 Release: out now

This kneeling pointing Chiricahua warrior points in the direction where the enemy is hiding... Now, is he pointing at some of the hated 'Long Knives' or some fellow Apaches...? You get to decide.

» www.kingandcountry.com

For more new releases visit our website...
ccofgb.co.uk



LEGO CREATOR MODULAR SWEET SURPRISES

Price: £34.99

Release: out now

Serve the happy customers with tasty treats at this cozy LEGO® cake shop, or continue the adventure with this 3in1 model - take a break at a relaxing Pool House or open a Food Corner Café. » www.lego.com

SUBSCRIBE & SAVE over 30%



The UK's ONLY monthly newspaper dedicated to collectable toys and models - with all the latest news, auction results, comprehensive events guide and fascinating features!

Why subscribe?

- **SAVE TIME & MONEY** – there's no need to travel to the shops.
- **FREE DELIVERY** to your door every month.

Our special Direct Debit offer means that you...

Pay just
£7.99
per quarter

AUCTION PRICE GUIDE
The latest farm vehicle and diecast toy results

COLLECTORS GAZETTE

July 2018 • Issue No 412 • www.ccofgb.co.uk • £3.50

AUCTION NEWS
Tinplate sale flies
Rare vintage collection is a big hit at Vectis
Sold for £744

SPACE TOYS FROM THE 80s
Futuristic vehicles by three British manufacturers

O GAUGE TINPLATE
Profiling the rise of larger scale trains

BEST OF BRITISH
Looking at the history behind Charbens lead models

EVENT DATES
The UK's best guide to fairs in your area

STARTER'S ORDERS
A day at the races with Britains Racing Colours of Famous Owners.

SWAPMEETS
Find out what was on offer at recent events

ISSN 0957-1304
9 770957 630162

Subscribe today...

01778 392480 • www.collectorsgazette.co.uk

Quote **GAZ/SUBS18**. Subscription price available until 31.12.18

NEWS

IN-DEPTH

PRICE
GUIDEYOUR
HOBBY

It's as easy as ABC!

This month **Alwyn Brice** is studying the signs of the Zodiac.

After last issue's E (Elf 'n' Safety), we blast off. F, if you haven't already guessed, is for *Fireball XL5*.

For many readers, I reckon, futuristic toys are all about robots and spacecraft. And why not? Even if space travel and science fiction was only first established in the Victorian era (HG Wells wrote *The Time Machine* in 1895 and *The first Men in the Moon* in 1901, for example), the fascination of the stars and the interest in what lay over the horizon has always been a magnet for us mortals.

Thus, if you want to encapsulate it all, then *Fireball XL5* fits the bill: a handsome pilot, an attractive female, a boffin, assorted simians and a robot: instant appeal! Gerry Anderson brought the concept to life back in 1962, in the wake of *Supercar*, and just prior to *Stingray*. It would be his last monochrome offering and in all, 39 episodes were made.

Despite the fact that in 1962 merchandising was in its infancy, as indeed was television, there is quite a bit of XL5 memorabilia to collect. If you get the Fireball bug, then it's a case of hunting. At the more modest end of the spectrum (price-wise) is the jigsaw puzzle (Tower Press was behind this); I believe at least two images were dissected and the trick, of course, is buying an example that is complete.

On the extreme rarity front

(and thus highly desirable) is the Kitmaster spacecraft. You'd be lucky to find an unmade example after all these years. At around a foot long, with detachable nosecone and complete with pilots, this is a stunning toy when made up. It wasn't available in Woolworth, either: to acquire it, you needed to send off the princely sum of 4/- (20p) and two lollipop wrappers from Zoom. In the same rarity category is the Zodiac water pistol by Fairylite.

Naturally there's a board game (by good old Milton Bradley). The space journey involves dice throwing, and it contains press-out card characters (mounted on jetmobiles) and plastic bases, but it's not easy to find intact.

For real play value, check out the Hong Kong-made XL5 with parachute. Yes – you catapulted the plastic rocket up into the air in the belief that its parachute would open, as would that of the pilot, permitting both to safety return to terra firma... And how many would have survived that sort of treatment? Not many.

Then again, if you like trade cards, then Como Confectionery issued an XL5 set in 1965 with their sweet cigarettes (different times!). I believe there are 50 to find but they are not cheap when they do surface.

Product Enterprises released a diecast model of the spacecraft in 2003 if your budget is really tight – and if you're truly penniless, then content yourself with the original vinyl record, which is readily available. Released as a 45 (rpm, that is), the title track is sung by Barry Gray and his Spacemakers.

But you'll need a record player... **CG**



ABOVE

Rosebud Kitmaster, bought out by Airfix in 1962, produced this attractive model of the iconic spacecraft.

LEFT

Puppets were still in vogue in the 1960s (and not just on the small screen): this model of Venus was from famous maker Pelham.



BELOW

It's not terribly exciting within, but the Milton Bradley boardgame is hard to find and quite prized.



The rebirth of O gauge tinplate

In the first of two parts, **Mark Nolan** profiles the resurgence of larger scale trains made the old fashioned way.

It's a fairly safe bet that most train collectors have, at some stage in their lives, flirted with realism. By that I mean, real modelling; the art of producing a working three dimensional picture that is a perfect representation of the real world. In other words, a full on model railway, right down to miniature gravel between the miniature sleepers. (Alright I know the granite stones are 'ballast', not gravel, but this is a family publication, so there'll be no rivet counting here thank you.)

Anyway, once you've realized an accurate model of a small station takes up a whole dining room, attracts dust and will never be finished, you start to realize the benefit of toy trains. Especially if you have lots of them. In fact a layout crammed full of toy locos, rolling stock and buildings is so busy, no-one really misses the pebbles in the tracks. And when you've finished playing with them, you can pack them away into boxes. (The trains, not the pebbles.)

It's then you start going to swapmeets, looking at lots of bashed up tinplate trains, and it dawns on you that you can't afford very many of them, because the nicest stuff is pre-War and costs an arm and two legs.

Fortunately, other more enterprising chaps than you and I saw this anomaly and decided to do something about it. The result turned O gauge onto its head and



Highfield North London tank loco complete with genuine dust.

created a whole new market for collectable toy trains. These are made with the benefit of modern technology to design, press and print, but the materials and construction are essentially using traditional methods.

A BRIEF HISTORY OF TINPLATE

It's important to realize that most British trains were O gauge tinplate until the late 1930s; Bassett-Lowke being the cream, Hornby being the more affordable, commercially produced. Motion was usually provided by clockwork, occasionally live steam, or electricity supplied from batteries or

light fittings, and delivered via a central third rail to skates mounted under the loco.

Toy production was interrupted by war, but Hornby, including their smaller 'M' series clockwork trains, did reappear in the 50s, only to be wiped out by a tsunami of newfangled OO gauge from (mainly) Hornby-Dublo and Tri-ang. It is ironic that the success of Dublo cannibalized Meccano's other ranges, but smaller was the way the market was going.

HOW IT'S DONE

We all nod sagely at the term 'lithographic tin printing' but what is it actually? It's literally printing on tin as if

it were paper, with a different run for each colour. In this way the makers can create a three dimensional effect on a flat surface. However, the word 'tinplate' has become generally accepted as the trade word for any trains which are produced in quantity and made of metal.

To the modern eye, used to perfect shapes and intricate plastic moulding, litho tinplate looks quaint and toy-like, until you pick it up. Without feeling the weight, heft and texture of a tinplate train, you're only getting half the picture.

So the art of printing and design has always been crucial to the production of

COLLECTORS FACT SHEET

- A deceptively large listing of O gauge tinplate trains and an excellent reference source is Graeme Eldred's site at binnsroad.co.uk
- Another essential source of information about O gauge tinplate can be found at tinplatetimes.com
- The 'Li' in 'Lithographic' comes from 'limestone' which was ground perfectly flat and used as a medium to transfer ink prior to the invention of metal printing plates.
- 'Offset lithography' as used on tin toys means the ink is transferred from the plate to a large rubber roller, and then to the tin, effectively treating the tin as if it were paper.
- Each colour gets its own run, meaning accuracy is critical for the success of the process.



ABOVE
ACE Stanier tank. This popular and versatile loco was produced in 2009 in LMS and British Railways liveries.



ABOVE
Highfield coarse scale Metropolitan steeple cab loco no 6.



ABOVE
The way it's done, or should be done. Clean, simple, ACE Southern Railway restaurant car boasts detailed lithographed tinplate, interior seating detail and table lamps. They also come supplied with coach name destination boards for that finishing touch.



ABOVE
Highfield dual voltage three rail LNWR 2-4-0 tank loco.

commercial toy trains, for the models themselves, and their boxes, catalogues and advertisements.

THE MANUFACTURERS

As is often the case, toy train manufacturers can have a tortuous history of ownership, locations and name changes, not to mention disputes! Names like AS France,

O gauge locos included an LNER Y7, a coarse scale LNER 2-8-0 loco and a North London 0-6-0 tank loco.

Highfield Models made an interesting Sentinel loco although this was a white metal kit rather than tinplate. They also supplied coach kits, bogies and wheels. Tinplate coaches included a Wagons-Lits Pullman car, an SECR

The loco is dual voltage, 12v DC & 20v AC.

The unusual name 'steeple cab' refers to a particular design of electric loco where the cab is central and prominent, usually with the pantograph on the cab roof (although presumably for economy this was omitted on the models). Forward and behind the loco are sloping



ABOVE
Highfield LNWR composite and brake composite coaches labelled as 'Traditional Tinplate'. Picture courtesy of Vectis Auctions.

Alright I know the granite stones are 'ballast', not gravel, but this is a family publication, so there'll be no rivet counting here thank you.

Darstaed, ETS, Corgi Bassett-Lowke, Hachette and of course ACE will feature in part 2.

TINPLATE PIONEERS

Peter Middleton, trading as Highfield Models, issued an interesting selection of products from scale coach kits to Hornby style tinplate locos, coaches and wagons. The company was based at Bishop Thornton, Harrogate.

mail coach and a Southern flat wagon. Some coaches had 'HIGHFIELD MODELS England' printed on the end. Many models carry a label reading 'Highfield House, Bishop Thornton, Harrogate'.

One of their most endearing models was a three rail coarse scale steeple cab loco no. 12. As well as the green version it was produced as a Metropolitan loco in maroon.

noses which can house anything noisy or bulky which is not required in the rather small cab. The North Eastern Railway commissioned two steeple cab locos in 1902 to haul heavy mineral trains over a short route with steep gradients. These unusual locos had dual power collection (third rail and pantograph) and survived until 1964. **CG**



ABOVE
The shape for tinplate: Highfield O gauge coarse scale three rail steeple cab loco no 12.

Under starter's orders

James Orwell has a day at the races with Britains Racing Colours of Famous Owners.



ABOVE RIGHT

Sir Victor Sassoon's Pinza ridden by Gordon Richards beat The Queen's Aureole in the 1953 Derby.

In 1925 the William Britains Company, famous for its lead soldiers, decided to launch a new series of civilian figures. Having already had success with their hugely popular and equine related Hunting series, and having produced sporting figures of a footballing and cricketing nature since the turn of the century, Britains had now realised the potential for a horse racing series. This was to be titled "Racing Colours of Famous Owners".

Britains sensibly chose the first releases to be some of the leading owner-breeders of the era: King George V, Lord Astor, Lord Derby, Lord Rosebery, Lord Londonderry and Lord Woolavington.

The first six released all carried the same reference or model number of #237 and were in slightly larger scale than the 1/32 gauge that the majority of the Britains civilian figure range

was scaled to. Subsequent releases used the catalogue number #1463. From 1951 onwards Britains changed the numbering system to use an RC pre-fix followed by a model number for each specific owner, starting with The King as RC1, Lord Astor as RC2, Lord Derby RC3 etc.

Between 1925 and 1960 Britains would release upward of 250 individual owners

owner, trainer or enthusiast who wanted a specific set of silks re-creating. An all white silks jockey was also available so that your average 'over the counter' customer could re-paint it to the design of their choosing.

Much of the work in identifying which colours were released, and to some degree in which year, was done by Britains collector Peter

much to correct and amend these errors through his research of the British and American racing manuals. Another common error on the sample cards were misspelt names of which again many were identified and corrected.

There were two key periods in the production of the Racing Colours series, Pre- and Post-War. Production actually stopped in 1941 and did not

Pre-War releases came in a white box with a blue or black label applied to the front. Post-war boxes were an off white beige colour with a printed title and red printed border.

BELOW

Cornelius Vanderbilt "C.V." Whitney was an American businessman, film producer, writer, philanthropist, polo player, and government official, as well as the owner of a leading stable of thoroughbred racehorses.

colours. Sixty three of these were advertised at various times in the annually produced Britains trade catalogues. Production quantities of these are not known, suffice to say that these are the less difficult ones to track down for collectors today. Of the 'uncatalogued' jockeys, the production levels varied from as low as 1 or 2 per colour, through to dozens or several hundreds. The reason being some of these were produced by Britains as part of a production run following the emergence of a new and successful owner, whereas others would be commissioned by an

Kirk who documented these details in his extremely useful and self-produced colour reference guide "Racing Colours of Famous Owners". Mr Kirk gained much of his knowledge from partaking in Christies 1994 auction of Britains archive material in which a number of sample cards were auctioned. Even so, several of the sample cards were found to be incorrectly labelled (sample cards being boards with several jockeys attached and maybe 1 or 3 horses). Some of the more common errors appear to have been the result of jockeys being removed by the original salesman and subsequently incorrectly re-strung against the wrong name. Mr Kirk did

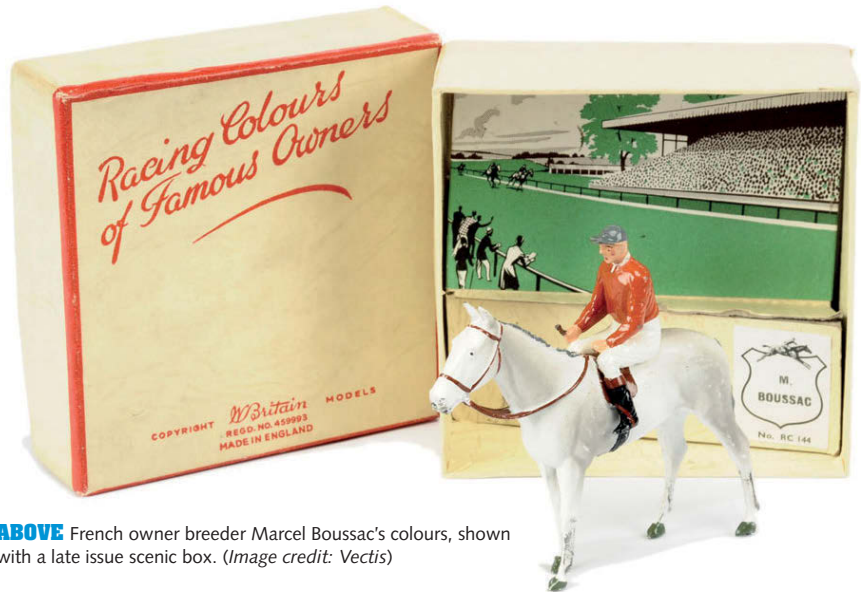
begin again until 1951. In 1940 American racing colours were introduced for the first time. In 1958 a small number of Canadian colours (8 in fact) were introduced and although catalogued by Britains are still some of the hardest to find. Production on the series finally ceased in 1960.

Pre-War releases came in a white box with a blue or black label applied to the front. Post-war boxes were an off white beige colour with a printed title and red printed border. If the colours were mass produced the owners name is often printed directly onto the box as well. It is equally common to see the owner's name applied in the form of a printed sticker.





ABOVE Lord Glanely's colours, seen here with a pre-War box.



ABOVE French owner breeder Marcel Boussac's colours, shown with a late issue scenic box. (Image credit: Vectis)



Peter Kirk's self published Britains Racing Colours guide. An invaluable reference for collectors of the series.



ABOVE The Queen Mother's colours – pale blue with gold braces. Note the gold tassel on the black cap.

The very last boxes produced between 1958 and 1960 were slightly deeper as they included a scenic background insert that the figures could be displayed against.

The shape of the lead models never changed throughout the series although the paint styles varied slightly. The horses were always generic and not intended to represent any particular racehorse. The horses logically came in 3 colours: brown, grey and black. Brown was most common with shades ranging from chestnut through to bay and a true dark brown. All had black tails, black pleated manes and black hooves. They also all had a white stripe on the face and any number of white painted "socks" (lower legs). The earliest brown horses sometimes had a very reddish tinge to them with slightly false looking red/orange mouths and nostrils. The grey horses ranged from almost white through to sandy colours to a bolder more true grey. Grey horses were very popular with customers and a disproportionate amount of greys were produced for

sale than would be found on the racecourse (about 3% of racehorses are grey). Retailers were not averse to swapping the horses around in the boxes to suit a customers purchasing preferences. Black horses with grey hooves and a white stripe on the nose seem to be the rarest of the colours. My own collecting experience would suggest the ratio of brown to grey to black to be about 75:20:5.

Air brushing techniques were used on the horses starting in the early 1930s which improved the realism somewhat. All post-War horses had a noseband painted as part of the bridle whereas pre-War horses did not.

It is quite hard to find mint examples of the Racing Colours series although they do of course exist. Flaws to look out for when buying today are repairs to the jockeys legs, the end of the jockey's whip is often missing, being a fragile point, and cracks and stress damage to the horses undercarriage.

Although the majority of the owners colours have passed into the history books

for now, a few of them can still be seen on the racecourses to this day. The most famous being The Queens colours, that she herself inherited from her father King George VI. The colours first being registered by King Edward VII in 1875. The Aga Khan's chocolate and green hoops were later used by his son, Prince Aly, after his death in 1957, and subsequently passed to the current Aga Khan IV in 1960 following Prince Aly's death. The current Aga Khan used these as his second choice colours for many years when he had two runners in a race. The colours were carried by 1988 Derby winner Khayasi and 1999 Ascot Gold Cup winner Enzeli amongst others. Lord Derby's black jersey white cap colours were still being used by the current Lord Derby in the early part of this century and were carried by his champion filly Oujia Board. **CG**



ABOVE Sir Victor Sassoon's colours on a bay horse with post-War box.

Space vehicles



ABOVE

A good example of Magnetron from Corgi's X-Ploratrions range.

BELOW

The K-2003 Crusader.



BELOW

Corgi X-Ploratrions X1 Rocketron.



Mike Piggott looks at some futuristic space vehicles made by three British manufacturers in the 1970s and '80s.

When *Star Wars* hit cinema screens in 1977, it led to a huge boom in science fiction films and related merchandise, including diecast models. Some toy companies, such as Kenner and Dinky, produced licensed models based on these franchises. Others took a different approach to sci-fi models, and produced non-licensed, futuristic ground vehicles.

ADVENTURE 2000

The first of these was the Adventure 2000 range from Matchbox, part of the big King

wheeled scout car and a tracked, armoured command section. Both parts clipped together, and the scout car could be launched by pushing a button on the rear of the command car.

■ K-2002: Flight Hunter

A six-wheeled car with opening gull-wing doors, Flight Hunter could convert into a flying vehicle. Pressing the rear air intake released a pair of red plastic aircraft wings. The vehicle featured an aeroplane tail and two cannons on the nose.

■ K-2003: Crusader

A half-track type vehicle, Crusader featured wheels at

set, which contained Rocket Striker and three smaller vehicles from the Matchbox miniature range: Planet Scout, Cosmobile, and a rather undersized Rescue Hovercraft.

■ K-2006: Shuttle Launcher

The 1981 catalogue showed the Adventure 2000 in a new blue livery, although the range was discontinued before this happened. Only the new and mega-rare Shuttle Launcher appeared in this colour. Similar to Crusader, it had a large, articulated launching ramp on the roof which fired white plastic 'shuttle' discs.

Adventure 2000 vehicles were sold in colourful

The catalogue description gave the loose premise of 'The year is 2000...the planets prepare for war!' In later editions they were given the more peaceful purpose of 'an expedition to the planet Zeto'.

Size series. Produced from 1977 to 1981, they were large, well-made, solid toys with lots of play value. All were painted a metallic avocado-green shade, with amber windows and chromed interiors. The catalogue description gave the loose premise of 'The year is 2000...the planets prepare for war!' In later editions they were given the more peaceful purpose of 'an expedition to the planet Zeto'.

■ K-2001: Raider Command

This was an amazing composite vehicle that could be split into two: a fast four-

the front and tank treads at the rear. It had a futuristic cab with amber dome lights, while mounted on the rear was a rotating turret with a pair of pivoting cannons.

■ K-2004: Rocket Striker

Released in 1978, Rocket Striker was a six-wheeled attack vehicle with flip-down side panels that revealed a rocket launcher and a supply of missiles. The radar scanner on top of the cab rotated when the vehicle rolled along.

■ K-2005: Command Force

New for 1979 was this gift

window boxes with outer-space backdrops, and three spacemen figures were included. They normally sell for around £30 - £50 each, except for the scarce Shuttle Launcher, which can go for over £200.

CORGI X-PLORATRIONS

Corgi was next to jump on the bandwagon with the X-Ploratron range, first released in 1979. There were four vehicles in this range, which were all in different colours. Each of the models had a novelty feature incorporated, such as a



ABOVE
The four Lone Star Space Commanders - Galactic Scanner, Missile Interceptor, Solar Activator and Laser Disintegrator.



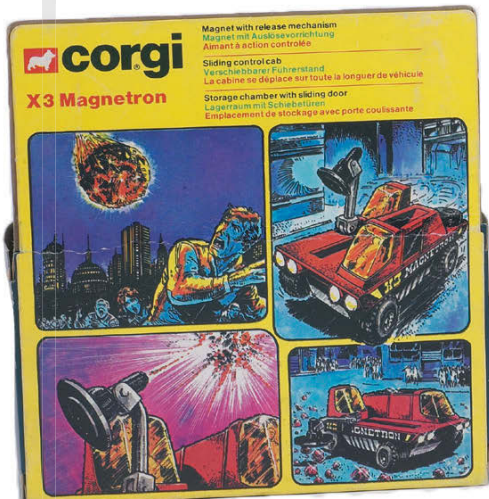
ABOVE LEFT
Space Commander packaging.

ABOVE RIGHT
X-Ploratron packaging.



LEFT
Adventure 2000 packaging.

BELOW
Packaging was illustrated by 2000AD artist Carlos Ezquerra.



compass or magnifying glass, to give it extra play value for young children.

X1: Rocketron

A six-wheeled, tracked vehicle used for polar exploration, it was painted light blue with an open rear bed and an enclosed cockpit with amber glazing. Inside the cabin was an oversized compass that really worked, while a working rocket launcher was mounted on the rear.

X2: Lasertron

Using the same body casting as Rocketron, Lasertron was painted neon orange with sprung wheels and an open cockpit. Mounted at rear was a reflector with a vari-vue lens that changed from yellow to grey.

X3: Magnetron

This was an unusual looking vehicle with a split design. On one side was a sliding operator cabin with a crane-mounted magnet. The magnet could be used to pick up metallic items and load them into a hopper located behind the driver's cabin on the other side. Magnetron had four wheels and was painted bright red.

X4: Scantron

The final vehicle in the range was a strange looking flat-bottomed boat used for swamp patrol. Mounted in the hull was a working magnifying glass that enlarged anything it passed over. The enclosed cabin rocked as the vehicle rolled along on its concealed wheels. Also fitted was a simulated vegetation cutter and radar scanner. Scantron was painted bright green with a dark green cabin.

The X-Ploratrons were described in the Corgi catalogue as '21st Century global guardians centred on a fictitious futuristic world'. They were packed in individual window boxes with an illustrated comic strip on the back by well-known comic book artist Carlos Ezquerra. They are not hard to find and good examples sell for around £20.

LONE STAR SPACE COMMANDERS

Another range of space

vehicles was produced in 1983 by Lone Star Toys, one of the 'also-rans' of the British diecast industry. Unlike the previous ranges, the four Space Commanders all used the same casting with different fitted accessories. The basic vehicle was a six-wheeled craft with a very big front overhang. The four models were painted different colours, with a silver-grey metal base. The interiors could be red or yellow, and the glazing could be green or amber. A radar dish and antenna were fitted to the cab roof. All of the rear-mounted weapons originated from the old 'Modern Army' military vehicles series, and were re-purposed here as various space weapons.

SC-1: Galactic Scanner
Painted blue, this model had a radar dish mounted on the rear, now acting as a space scanner.

SC-2: Missile Interceptor
With a working cannon mounted on the back, this model could fire missiles, and was painted metallic green.

SC-3: Solar Activator
This vehicle had a solar generator mounted on the back, recycled from an army searchlight, and was all silver.

SC-4: Laser Disintegrator
This ominously-titled vehicle was finished in bronze, and had a pair of laser cannons mounted on the rear.

Space Commanders with packaged in small boxes with no description of the vehicles on them. They were only on sale for a very short period and are hard to find, as Lone Star went broke just after they were introduced. **CG**

Best of British

Charbens

Brian Howes looks at the story behind these lead figures and vehicles.



My earliest memories of Charben's toys go right back to when I was in my late teens (a fair while ago now I know!). It came about when a shoe box was discovered in my late grandfather's effects containing around a dozen or so old toy cars all with perished tyres and chipped paint. They were heavily play worn but still had a great charm about them so I put them on display alongside the humble beginnings of my rapidly developing toy collection. After doing a bit of research I realized that they had all been made by a firm called Charbens but thought little of it at the time. One of these cars was instantly recognisable as Sir Malcolm Campbell's famous Bluebird land

speed record car that had reached the remarkable speed of 301 miles per hour in September 1935 on the Bonneville Salt Flats of Utah, USA. This was given a special lasting place in my collection while the others eventually went into a scrap box. It was thought that these toys once belonged to one of my uncles or were shared between all the boys as toys often were in those days.

Charbens were just one of many toy makers to produce a model of Bluebird, that splendid sleek record breaking speed machine. They say Campbell originally purchased the blue paint from a local ironmongers' store. Blue was the only colour he had in stock in any quantity and the original car became known as Bluebird as a result.

The story of Charbens began long before Bluebird was conceived.

It started making lead soldiers and

farmyard figures during the mid-1920s when brothers Charles and Benjamin Reid set up in business at premises at 34 Mitford Road, N19. They were aged 38 and 35 years respectively in 1926, which is widely thought to have been the year of production. The name they chose to use was a simple amalgamation of the first letters of their Christian names CHARLES and BEN. Their father, William Reid, had been born in Devon and worked as a groom so the Reid brothers' fascination with horse-drawn vehicles probably stemmed from their childhood. The family lived very close to the Britains toy factory which was located in an area of London housing several other lead figure makers. These included John Hill & Co, Taylor & Barrett and Crescent. It is known that some of the men who founded those companies had learned the trade of hollowcasting

whilst working for Britains.

Charbens described themselves as 'manufacturers and designers of metal and electro-plated novelties and die-casters' and advertisements were also placed in Games & Toys promoting its lead farm figures and scenery which in the early years also included several little carts, a windmill, bridge and a horse-drawn roller.

In 1928 Charbens exhibited its early products at the British Industries Fair held at the White City and as well as manufacturing figures and toys it was listed in Graces Guide as also manufacturing metal moneyboxes and plated pincushions.

By 1929 the company had vacated Mitford Road and were operating from premises a short distance away at 20 Andover Yard, 219 Hornsey Road N7.

A few nice large scale horse drawn vehicles were made in the pre-War



ABOVE Motorcycle Dispatch Rider.



BELOW Charbens No.6 Tractor with Driver.



BELOW One of the Disney range of models - this version sees Mickey Mouse playing the barrel organ.

NEWS

IN-DEPTH

PRICE
GUIDEYOUR
HOBBY**TOP RIGHT**

Charbens No.9 Motor Coach.

RIGHT

A rare lead workman with his pick axe.

BOTTOM RIGHT

Model No.8, an early tipper lorry.

ABOVE

This Bristol Blenheim Bomber has seen better days.

years and these represent some of the finest toys made by Charbens. They include No.500, a horse-drawn gypsy caravan complete with gypsy man and his wife who is holding a baby in her arms. This toy came with a camp fire and cooking pot and a fully laden washing line.

Another super horse-drawn offering was a bread delivery van followed by a milk float in the livery of Express Dairies. These were offered under the banner of MIMIC Metal Series in boxes made of plain brown cardboard with simple black and white glue-on

with the Reid brothers each owning equal shares in the company. It appears that toy production was still being maintained despite wartime restrictions with vehicle bodies being cast in plaster instead of lead and then heavily painted so the toys appeared to be metal. The plaster was revealed when the paint started wearing on the edges. Existing stocks of metal wheels were used up to create these toys. These wartime plaster toys are now extremely rare and make good prices when they appear on the market.

A switch to zinc diecasting came

produced through to the mid-1970s. Around this time the North London premises on Hornsey Road were compulsory purchased and re-developed by the London Borough of Islington. Some production was maintained, however, in Biggleswade, Bedfordshire.

In 1975 Charbens came into the ownership of David and Maureen Smith who produced plastic packaging for their own business operations. This was later renamed as Charpak Ltd.

There is no doubt that Charbens played a significant role in the development of metal toys in Britain throughout its four decades of production. Many of its toys are now enjoying a great revival in popularity if you can find them in good condition?

Gone are the days when Charbens products were considered as being of little interest or having little value in terms of collecting.

Just watch out for that dreaded metal fatigue! **CG**

They say Campbell originally purchased the blue paint from a local ironmongers' store. Blue was the only colour he had in stock in any quantity and the original car became known as Bluebird as a result.

labels. One of the rarest of these pre-War vehicles was a charming horse-drawn coffee stall complete with stall operator, urn and cups.

Prior to World War Two Charbens adopted a fairly labour intensive method of slush casting for the production of its lead vehicles which only allowed a minimal amount of detail to be featured on the castings. Copies were made of other manufacturers' toys several of which were based on Tootsietoy models. These include many different versions of the Mack truck which was used for both civilian and military models.

Charbens & Co Ltd became a limited company in October 1943

after the war when new diecasting machines were installed. This brought much finer detail to Charbens toys. New post war offerings included a Tractor with driver, a Horse Drawn Grass Cutter, a Tractor with Grass Cutter and a Diesel Road Roller. One of the more pleasing releases at this time was an articulated Low Loader with Cable Drum load which is one of the harder to find Charbens toys. Sadly all these toys are prone to metal fatigue due to contamination of the zinc by when they were cast.

Other models to look out for from the post-War years and into the 1950s are a Motor Coach with interior seating sold in various colour

years. By the early 1960s around thirty eight different diecast vehicles were featured in the Charbens toy catalogue although great challenges lay around just around the corner as the British toy industry slowly declined.

Charbens metal toy production ended sometime around 1967/68 when the factory switched almost entirely to the production of plastic toys. Its plastic figures were

RIGHT

A 2-wheeled horse drawn, tipping wagon made from plastic.



An introduction to...



Retro computers

In the days before the internet... wait, before the internet? What do you mean 'before'? There was no life before the internet, surely?

ABOVE

Not only will your kids have no idea what a floppy disc is, they'll be even more baffled when you tell them that they weren't actually floppy at all.



ABOVE

The Apple II may not fetch as much as its predecessor, but the first 'proper' home Apple computer is hugely popular with collectors.

You probably wouldn't think twice about buying a 10-year-old car. Perhaps some of your clothes date back that far, or maybe the appliances in your kitchen. But trying to do anything on a 10-year-old computer is like looking for a petrol station in medieval Wiltshire.

Moore's Law dictates that the approximate processing power for computers doubles every two years. This is part of the reason why computers date so very quickly. Just 10 years ago a new PC would likely ship with 2.8GHz dual-core processor, 2GB of RAM, 500GB of hard drive space and a 15-inch monitor. This article is being written on a computer with a 4GHz six-

core processor, 16GB of RAM, 4TB of hard drive space and a 24-inch monitor. And it was built a couple of years ago, too!

Why on earth, then, would anyone be interested in old computers? Well, why are people interested in anything that's functionally obsolete? Lots of people have an emotional attachment to the first computer they owned, while others are fascinated by the aesthetics of older hardware or the functionality of older software.

Exactly how far back you have to go before computing transitions from 'dated' to 'retro' is a matter for debate. For some people Windows 7 feels like a call back to the dark ages, while others feel that anything pre-Windows falls

into the category. A general rule of thumb among online collectors points to anything 15 years old or more, although age is only one determining factor. A computer's 'vintage' can be defined by many factors – condition, rarity, production runs or commercial success to name but a few.

Like anything, though, what is or is not desirable comes down to the individual. Anyone interested in getting into the world of retro computers needs really just to identify specifically what appeals to them.

Apple is an obvious starting point for many, with early Macs or perhaps even older systems such as the Apple II+ serving as a good entry point. The iMac is credited with kickstarting the shift

from hobbyist to mainstream consumer computing, and is a beautiful object in its own right so therefore an obvious choice for many.

For others, home computing may instead be more closely aligned to their experiences of playing games as a child or young adult. Systems from makers such as Sinclair, Atari and Amiga remain very popular to this day, and there's a tremendous variety of systems and software available.

The Sinclair Spectrum family is still loved in the UK, with the ZX81 and ZX Spectrum even now supported by a surprisingly healthy and enthusiastic community. Also popular in the UK is Acorn's BBC Micro, which was a regular favourite at

WHERE TO START?

Making the decision to start collecting retro computers is one thing. Deciding how to start is something else entirely. Here are a few recommendations of good machines to kick off with:

- **IBM 5150** – Often referred to simply as the IBM PC, this 1981 machine was the first personal computer to be released by IBM. Boasting a floppy disc drive, 4.77MHz Intel processor and a maximum of 256kb of RAM, it's a classic from a golden time in computing. Expect to pay anything from £30-£400, although paying the extra for something in good condition will really amplify your experience.
- **Acorn BBC Micro Model B** – Designed in collaboration with the BBC's Computer Literacy Project, this learning-focused machine was many students' first ever computing experience. With over 1.5m units sold,

BBC Micros are not a rarity, although examples in good condition can fetch as much as £100.

- **Sinclair ZX Spectrum** – With 5m units sold, the Spectrum remains easy to come by. Its delicate rubber buttons and life as a bedroom games machine mean that finding one in decent condition is a bigger challenge. Also be sure to familiarise yourself with the many clones and more recent rebooted versions of the machine if you want to ensure you grab yourself an authentic model. The newer re-releases have their merits but rely on emulated software, which isn't quite the same pure experience.
- **Atari ST** – There are many different versions of the Atari ST, which was a very popular games machine in the late 1980s. Our pick would be the excellent Atari ST 520 STe. It can be hard to track down without

discoloured keys and casing, and do try and grab the colour as opposed to monochrome monitor if you can. Decent examples can be found for around £50 and you'll commonly come across bundles of game discs at car boot sales. With such a rich catalogue of software available, the ST can still provide a lot of entertainment for the price.

- **Amiga 500** – Commodore's machine was the Atari ST's big market rival, and in many ways offers a similar experience. It runs its own operating system though, and while the ST had better musical clout, most people agree that the Amiga was the better overall machine. The 500 Plus, 1200 and 600 are all interesting alternatives, too – in fact, Amiga collecting as a self-contained pursuit is a fantastic space.



LEFT
The English-made Acorn Archimedes A3010 was the first machine to use the now standard ARM computer architecture.



ABOVE
The Amiga 600 was one of Commodore's later machines and offered a more compact and portable experience.



ABOVE
Where you in the Amiga camp or the Atari camp? The 500 ST was a cult machine, especially for amateur digital musicians.



ABOVE
The optional greenscreen monitor and tape-loader for the Amstrad CPC 464 was a big feature in a lot of childhoods.



ABOVE
The IBM 5150 was the first ever machine released by IBM and helped establish the market for home PCs.

UK schools in the '80s and '90s. Don't forget Amstrad, either, whose CPC 464 – often complete with a greenscreen monitor – remains a cult machine.

International collectors may be more familiar with offerings from Atari and Commodore, the rivalry between which was a defining element of much playground banter. The Atari 500 was a fantastic games machine, as were the Commodore 64 and the Amiga 500.

There's also a market for less successful but nonetheless

fondly remembered machines made by companies such as Tandy/Radio Shack, Texas Instruments, Mattel and Colecovision. Don't underestimate the demand for what were more run of the mill computers, either. There's huge enthusiasm for home work machines from recognisable names such as IBM, Microsoft and Dell.

Of course, if you're running old computers you're going to want suitable accessories, too. This hunger means the market for otherwise dated tech such as CRT monitors, floppy

disk drives and now obsolete storage tech such as Zip drives is thriving. The same can be said for old software. While versions of MS-DOS and other operating systems can be easily downloaded online, the appetite remains for boxed specimens, especially those which remain in good condition.

One of the larger challenges of collecting old computing tech is the need to make sure it's in working order. After all, while the condition of a table or ironing board is easy to assess when browsing a

THE BIG MONEY

While a lot of retro computers remain entirely affordable, there are some examples that are reserved for those who are willing to throw colossal sums at the hobby.

- The Altair 8800 was originally sold as a do-it-yourself machine that taught buyers how to build and run a computer. At launch it sold for around \$600 but can now fetch over \$2,000 on the current market.
- The Alto, by Xerox, was never sold on the open market. However, having formed the template on which later office laser printers were designed, a working model can now fetch anything up to \$10,000 at auction.
- The Apple 1 is about as far removed as you can get from the contoured and engineered marvels that the company produces today. It was designed to be sold as a bare circuit board onto which users would solder chips themselves. Its current market value can reach as much as \$25,000, which is around 40 times its launch price. The far sleeker Apple II, meanwhile, now fetches around \$250 – just a fifth of its launch price.
- Apple's original 128k Macintosh may not quite be worth the \$2,495 it was at launch, but a decent specimen can still fetch over \$1,500 – which is not bad for a computer released in 1984.

- Right at the top of the scale sits the five-tonne Cray-1, the now legendary supercomputer once used by the Los Alamos National Laboratory, which was in the 1970s referred to as the 'fastest computer in the world'. Expect to pocket around \$5m if you happen to find one at the back of your garage.



ABOVE
The 128k Macintosh offered the first hint that Apple's design team were going to do things a little differently.



ABOVE
The iMac was the first successful attempt to turn the often-alienating computer into a desirable consumer product.

car boot sale, there's no way to know for sure whether that slightly yellowed Acorn Archimedes A3010 actually boots up, or what the cause may be if it does not. Be wary of sellers who chuck around phrases like "yeah it worked fine when I last tried it 12 years ago" and instead gravitate towards those who have a good working knowledge of the specs and current software that is installed. Hardware that is supplied with the correct power supply and leads is often a better bet, too.

Like vintage cars, vintage

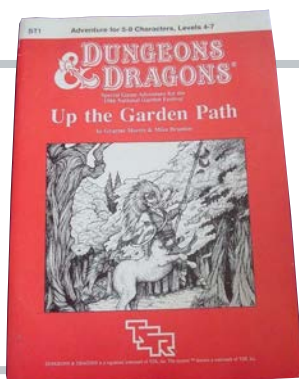
computing is really only for those who have the skill, patience or knowledge to diagnose and fix a problem. If an older machine doesn't boot up, it's possible to figure out why. But doing so will mean opening it up, testing the individual components and sourcing possible replacements. You'll need to know your way around the software, too. Of course, learning all of the required skills can be tremendous fun too! **CG**

eBay

From collectables of the future to old favourites, eBay always manages to produce some amazing finds... and even more amazing prices!



↑ Rare original Kenner Star Wars action figure set, featuring Hammerhead, Walrus Man and Greedo. Professionally graded by AFA with an 80 overall with 2 85 sub grades, in stunning condition and un-punched. Sold for £2927 (41 bids).



↑ An original TSR Dungeons and Dragons Up the Garden Path booklet from 1986. Module ST1 covering levels 4-7, by Graeme Morris and Mike Brunton. Sold for £2605.55 (45 bids).



↑ Rare LEGO Villy Thomsen Truck from the 2013 Inside Tour series. The seller had never seen another example, and this one was numbered 43/43. Sold sealed and in new condition. Sold for £2050 (15 bids).



↑ An American Dooling F Model Tether Car, imported from the US by the seller several years ago. It was powered by a Hornet Spark ignition motor, which turned over freely. The tyres had unfortunately hardened and distorted. Sold for £1728 (29 bids).



↑ A ToyBiz Lord of the Rings Deluxe set, featuring Arwen and Asfaloth ToyBiz. This red-boxed version was made for the European market, with possibly only 300 in existence. The box was great condition for its age, and the figures had never been out of box. Sold for £1180 (18 bids).



↑ This well-built coal fired live steam LSCB "Titch" loco had only been steamed once by the seller, around 12 years ago, when it was tested and issued with a boiler certificate. It has been dry stored since then. Sold for £1150 (2 bids).



↑ This American C53 Aristo Scalextric tinplate Austin Healey from 1958 was originally built in the UK before being shipped State side under licence. It was sold here with its original catalogue and export box. Sold for £1120 (20 bids).



↑ Corgi Gift Set No.38 Monte Carlo Rallye containing a Mini Cooper S, a Rover 2000 and a Citroen DS19. A scarce example in near mint condition with all its packing. Sold for £1080.99 (40 bids).



↑ A complete Zollmen Fancy Toy Space Train set. This set was sold in perfect condition along with its bag and header card. Sold for £935 (10 bids).



↑ A new Hot Toys Hulkbuster Avengers: Age Of Ultron figure in 1/6 scale. Standing at 55cm tall this figure features metal joints, retracting helmet and LED light-up eyes. **Sold for £741 (19 bids).**



↑ Matchbox Superfast MB4 Gruesome Twosome pre-production resin prototype from the 1970s. Both the model and box were sold in mint condition. **Sold for £888 (29 bids).**



↑ This rare Pelham Puppet Sea Horse from 1963 was sold with his original foam tail. Although it was hard and misshapen in places he was still in very good condition. **Sold for £870 (18 bids).**



↑ An all original blue bonnet label Corgi 258 Saints car, Volvo P1800. The model is in good condition in a good box complete with the correct blue Corgi club leaflet which was issued with this model. A rare model and a fantastic addition to any collection. **Sold for £801 (25 bids).**



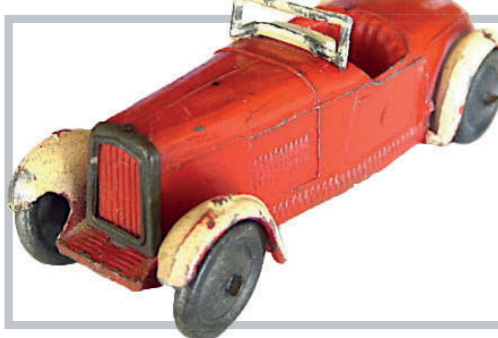
↑ A Shackleton Foden F.G.6 Tipper Lorry circa 1950, in good working order having been used very little. Complete with motor key, spanner, handle for operating the tipping mechanism and original box. **Sold for £920 (28 bids).**



↑ This rare Pelham Puppet Sea Horse from 1963 was sold with his original foam tail. Although it was hard and misshapen in places he was still in very good condition. **Sold for £870 (18 bids).**



↑ A boxed and unused Action Force Roboskull and Red Wolf set. The contents were in pristine condition and had never been assembled. The original instructions, sticker sheet and booklet were present. **Sold for £720 (4 bids).**



↑ An original Hornby Series 22a sports car circa 1933, one of the very first range of toys which soon became Dinky Toys. Some paint chipping but at 85 years old this can be forgiven. **Sold for £685 (52 bids).**



↑ A rare Tottenham Hotspur Famous Football Clubs Action Man from Palitoy. One of the rarest and last of the two football kits produced in 1973. Box contained football kit, boots, badge and ball. **Sold for £679 (4 bids).**



↑ A vintage French HotWheels Blackwall race car hauler. The cab, trailer and Upfront 924 were all in near mint condition while the box had some storage related wear and a tear across the top right front corner. **Sold for £671 (24 bids).**



↑ Here was a rare chance to get a U-graded Star Wars Blue Snaggletooth figure. This was the dent boot variation - which can be seen in the photo. **Sold for £645 (25 bids).**



↑ A complete Daktari Gift Set 14 from Corgi. All the vehicles and figures were present and in mint condition - Clarence the Lion even had his glasses on! The set showed no signs of having been played with. **Sold for £635 (19 bids).**

AUCTIONEER LISTING...

BEDFORDSHIRE

■ **W&H PEACOCK**
Bedford, Tel: 01234 266 366
toys@peacockauction.co.uk
www.peacockauction.co.uk

W&H PEACOCK
AUCTIONEERS & VALUERS

BERKSHIRE

■ **SPECIAL AUCTION SERVICES**
Greenham Business Park, Newbury
Tel: 01635 580595
www.specialauctionservices.com

SAS Est. 1991

BRISTOL

■ **EAST BRISTOL AUCTIONS**
Hanham, Tel: 0117 967 1000
info@eastbristol.co.uk
www.eastbristol.co.uk

EAST BRISTOL AUCTIONS

CHESHIRE

■ **CAPE DUNN**
Heaton Mersey
Tel: 0161 432 1991
capedunn.caroline@gmail.com
www.capedunn.com

CAPE DUNN
99 years as The Fine Art Auctioneers for Manchester

■ **BRITISH TOY AUCTIONS**
Runcorn, Tel 01928 579032
enquiries@britishtoyauctions.co.uk
www.britishtoyauctions.co.uk

British Toy Auctions
VINTAGE TOYS

COUNTY DURHAM

■ **VECTIS AUCTIONS LTD**
Thornaby, Stockton on Tees
Tel: 01642 750616
www.vectis.co.uk

Vectis
AUCTIONS LTD
COLLECTABLE TOY SPECIALISTS

CUMBRIA

■ **THOMSON, RODDICK AUCTIONEERS**
Carlisle, Tel: 01228 528939
edinburgh@thomsonroddick.com
www.thomsonroddick.com

THOMSON RODDICK

DEVON

■ **GREENSLADE TAYLOR HUNT**
Tiverton, Tel: 01823 332525
www.gth.net
antiques.saleroom@gth.net

gth

■ **PIERS MOTLEY AUCTIONS**
Exmouth, Tel: 01395 267403
www.piersmotleyauctions.co.uk
info@piersmotleyauctions.co.uk

Piers Motley Auctions

DORSET

■ **COTTEES AUCTION LTD**
Poole, Tel: 01202 723177
www.cottes.co.uk

COTTEES
Established 1907

ESSEX

■ **STACEY'S AUCTIONEERS AND VALUERS**
Rayleigh, Tel: 01268 777122
info@staceyauction.com
www.staceyauction.com

Stacey's
AUCTIONEERS & VALUERS

HEREFORDSHIRE

■ **BRIGHTWELLS**
Leominster, Tel: 01568 611122
www.brightwells.com/antiques-fine-art

Brightwells
Est. 1948

HERTFORDSHIRE

■ **EXCALIBUR AUCTIONS**
Redbourn, Tel: 02036 330913
www.excaliburauctions.com

Excalibur Auctions

KENT

■ **C&T AUCTIONEERS AND VALUERS**
Kenardington, Kent Tel: 01233 510050
enquiries@candtauctions.co.uk
www.candtauctions.co.uk

Auctioneers C&T Valuers

LINCOLNSHIRE

■ **GOLDING, YOUNG & MAWER**
Bourne Tel: 01778 422686
Grantham Tel: 01476 565118
Lincoln Tel: 01522 524984
www.goldingyoung.com

GOLDING YOUNG & MAWER
1864

UNIQUE AUCTIONS

Lincoln, Tel: 01522 690444
office@unique-auctions.com
www.unique-auctions.com

UNIQUE AUCTIONS
Est. 1985 in Valuers & Auctioneers

BATEMANS AUCTIONEERS & VALUERS

Stamford, Tel: 01780 766466
office@batemans.com
www.batemans.com

BATEMANS
AUCTIONEERS & VALUERS

NORFOLK

TOWNSEND AUCTION GALLERIES LTD

Kings Lynn, Tel: 01328 598080
david@townsend-auctions.co.uk
www.townsend-auctions.co.uk

TOWNSEND AUCTION GALLERIES

BARRY L HAWKINS

Downham Market,
Tel: 01366 387180
info@barryhawkins.co.uk
www.barryhawkins.co.uk

BARRY L HAWKINS
Independent Auctioneer and Land Agent

NORTHUMBERLAND

ANDERSON & GARLAND LTD

Newcastle Upon Tyne
Tel: 0191 4303000
info@andersonandgarland.com
www.andersonandgarland.com

Established 1848
Anderson & Garland
Auctioneers

NOTTINGHAMSHIRE

NORTHGATE AUCTION ROOMS LTD

Newark 01636 605905
www.northgateauctionroomsnewark.co.uk

NORTHGATE AUCTION ROOMS LTD

SCOTLAND

THOMSON, RODDICK AUCTIONEERS

Edinburgh, Tel: 0131 440 2448
edinburgh@thomsonroddick.com
www.thomsonroddick.com

THOMSON RODDICK

SHROPSHIRE

HALLS FINE ART

Shrewsbury, Tel: 01743 450 700
(ask for Fine Art);
www.hallsgb.com/fine-art

Halls (1843)

MULLOCKS SPECIALIST AUCTIONEERS & VALUERS

Church Stretton, Tel: 01694 771771
auctions@mullocksauctions.co.uk
www.mullocksauctions.co.uk

Mullock's
Specialist Auctioneers & Valuers

SOMERSET

GREENSLADE TAYLOR HUNT

Taunton, Tel: 01823 332525
www.gth.net
antiques.saleroom@gth.net

gth

TAMLYN & SON AUCTIONEERS

Bridgwater, Tel: 01278 445251
saleroom@tamlyns.co.uk
www.tamlynprofessional.co.uk

Tamlyns
Auction Rooms
Established 1878

SUFFOLK

DURRANTS

Beccles, Tel: 01502 713490
AuctionRooms@durrants.com

DURRANTS
SINCE 1857

LACY, SCOTT & KNIGHT

Bury St Edmunds, Tel: 01284 748 623
www.lskauktioncentre.co.uk

LACY SCOTT & KNIGHT

SURREY

EWBANK'S AUCTIONEERS

Woking, Tel: 01483 223 101
www.ewbankauctions.co.uk
valuations@ewbankauctions.co.uk

Ewbank's

SUSSEX

WALLIS & WALLIS

Lewes, Tel: 01273 480208
www.wallisandwallis.co.uk

WALLIS & WALLIS
The Specialist Auctioneers
Investments in memories
live' online with available

WARWICKSHIRE

WARWICK & WARWICK

Warwick, Tel: 01926 499031
www.warwickandwarwick.com

Warwick & Warwick
AUCTIONEERS OF COLLECTABLES

WEST MIDLANDS

ASTON'S AUCTIONEERS

Dudley, Tel: 01384 931001
www.astonsauctioneers.co.uk

Aston's
Auctioneers & Valuers

WEST SUSSEX

TOOVEYS

Washington, Tel: 01903 891955
auctions@tooveys.com
www.tooveys.com

TOOVEY'S

BELLMANS AUCTIONEERS & VALUERS

Wisborough Green
Tel: 01403 700858
enquiries@bellmans.co.uk

Bellmans
AUCTIONEERS & VALUERS

WILTSHIRE

WESSEX AUCTION ROOMS

Chippenham, Tel: 01249 720888
tim@wessexauctionrooms.co.uk
www.wessexauctionrooms.co.uk

WESSEX AUCTION ROOMS
— AUCTIONEERS & VALUERS —

WORCESTERSHIRE

JOHN GOODWIN FRICS

Ledbury, Tel: 01531 634648
Malvern, Tel: 01684 892809
Colwall, Tel: 01684 540300
Upton-on-Severn, Tel: 01684 593125
www.johngoodwin.co.uk

JOHN GOODWIN
THE PROPERTY PROFESSIONALS
EST. 1981

YORKSHIRE

SHEFFIELD AUCTION GALLERY

Sheffield, Tel: 0114 281 6161
www.sheffieldauctiongallery.com

SheffieldAuctionGallery
Antique & fine art auctioneers & valuers

HARTLEYS AUCTIONEERS

Ilkley, Tel: 01943 816363
info@hartleysauctions.co.uk
www.hartleysauctions.co.uk

HARTLEYS
AUCTIONEERS AND VALUERS

GARY DON AUCTIONEERS & VALUERS

Leeds, Tel: 0113 248 3333
contact@garydon.co.uk
www.garydon.co.uk

GARY DON
AUCTIONEERS & VALUERS

TENNANTS AUCTIONEERS

Leyburn, Tel: 01969 623780
enquiry@tennants-ltd.co.uk
www.tennants.co.uk

Tennants
AUCTIONEERS

INTERNATIONAL

TRAINS, PLANES & AUTOMOBILES

Sydney, Australia +612 4787 7974
auctions@antiquetoys.com.au
antiquetoys.com.au

TRAINS, PLANES & AUTOMOBILES

PRICE GUIDE

**FARMING
RESULTS**

This month we look at farm equipment at **Lacy, Scott & Knight**, and diecast vehicles at **Vectis, Wallis & Wallis** and **UK Toy & Model Auctions**.



♣ A Britains No. 9529 Massey Ferguson 135 tractor, with removable cab, muldozer adapter and plastic hubs in the original window box. *Sold for £130, Lacy, Scott & Knight, May.*



♣ A Britains No. 9529 Massey Ferguson 135 tractor, with removable cab and muldozer adapter, in the original sliding tray all card box, with driver. *Sold for £80, Lacy, Scott & Knight, May.*



♣ A Britains No. 9570 Massey Ferguson 760 combine harvester, in the original window display box with original buff colour outer sleeve, with original display header card. *Sold for £65, Lacy, Scott & Knight, May.*



♣ A Britains No. 9527 Ford Supermajor 5000 diesel tractor, plastic hubs with rear linkage attachment, air filter and exhaust apparent, with driver, in the original sliding tray all card box. *Sold for £90, Lacy, Scott & Knight, May.*



♣ A Britains No. 9610 Police Land Rover, appears as issued with original cones, signs and light fittings in original blue window all card box, with driver. *Sold for £75, Lacy, Scott & Knight, May.*



♣ A Britains No. 9572 Massey Ferguson tractor, with front loader comprising yellow and red body with plastic hubs in the original window box. *Sold for £70, Lacy, Scott & Knight, May.*



♣ A Britains No. 9630 Fordson Supermajor tractor and rear dump, complete with original yellow spade, rear fitting, and puppet steering control attachments. *Sold for £1200, Lacy, Scott & Knight, May.*



♣ A Britains No. 08735 modern release Land Rover series 1, in the original foam packed all card box, with original box outer, appears as issued with certificate. *Sold for £40, Lacy, Scott & Knight, May.*



♣ A Clifford Series Accurate Scale Model of a Fordson tractor, steering wheel a/f, in original all card pictorial sided box, some playwear. *Sold for £110, Lacy, Scott & Knight, May.*



♣ A Britains No. 128F Fordson Major tractor, metal hubs and rubber tyres, in original rare release Britains Farm duck egg box, with end flap and with original packaging. *Sold for £120, Lacy, Scott & Knight, May.*



♣ A Britains No. 127F Fordson Super Major diesel tractor, with attachment and driver in the original sliding tray all card box, one box end flap missing. *Sold for £180, Lacy, Scott & Knight, May.*



♣ A Britains No. 171F Fordson Super Major diesel tractor, with metal spud wheels, missing attachment, in the original sliding tray all card box. *Sold for £480, Lacy, Scott & Knight, May.*

DIECAST RESULTS



♣ Dinky No 100 Thunderbirds Lady Penelope's FAB 1, clear sliding roof, pink stripes, Lady Penelope and Parker figures, missile behind radiator grill and one harpoon, very good. *Sold for £90, Wallis & Wallis, March.*



♣ Dinky No 274 AA Service Mini Van, yellow with white roof and yellow rear doors, with sign to roof and blue interior, mint. *Sold for £140, Wallis & Wallis, March.*



♣ Dinky No 30SM Dinky Austin Covered Wagon, American Export Issue, in military olive green livery complete with tin tilt, very good. *Sold for £85, Wallis & Wallis, March.*



♣ Matchbox No 24A Cement Lorry, orange body, orange plastic barrel and grey plastic wheels, near mint. *Sold for £35, Lacy Scott & Knight, March.*



♣ Matchbox No 62A TV Service Van, cream body with red ladder, red aerial and black plastic wheels, near mint. *Sold for £35, Lacy Scott & Knight, March.*



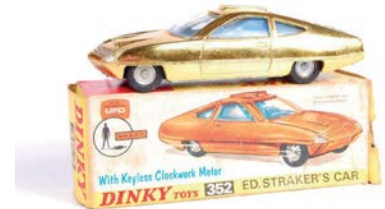
♣ Matchbox No 74 Daimler Bus, cream body, white interior and Esso transfers, near mint. *Sold for £20, Lacy Scott & Knight, March.*



♣ Dinky No 359 Space 1999 Eagle Transporter, metallic green and white, in original window box with unpunched Chad header card, mint. *Sold for £120, Lacy Scott & Knight, March.*



♣ Corgi No 273 Rolls-Royce HJ Mulliner Park Ward Silver Shadow, two-tone cream and blue with spun hubs and blue interior, mint. *Sold for £60, Lacy Scott & Knight, March.*



♣ Dinky No 352 Ed Straker's Car, gold plated body with silver detailing, blue interior, cast hubs, very good. *Sold for £55, Lacy Scott & Knight, March.*



♣ Dinky No 278 Vauxhall Ambulance, white body with spun hubs with ambulance driver, Red Cross transfers to doors, missing stretcher, good. *Sold for £30, Lacy Scott & Knight, March.*



♣ Dinky No 173 Pontiac Parisienne, red metallic body with twin white aerials, yellow interior with spun hubs, good. *Sold for £40, Lacy Scott & Knight, March.*



♣ Dinky No 157 BMW 2000 Tilux, metallic blue and white body with red interior, detailed cast hubs, near mint. *Sold for £40, Lacy Scott & Knight, March.*



♣ Dinky No 491 Ford Consul Cortina Super Estate, red body with cream interior with brown and cream side panels, spun hubs, very good. *Sold for £55, Lacy Scott & Knight, March.*



♣ Dinky No 286 Ford Transit Fire Appliance, metallic red body with off-white interior, spun hubs, in the original all-card box, very good. *Sold for £55, Lacy Scott & Knight, March.*



♣ Corgi No 207 Standard Vanguard 3 Saloon, pale green lower body with red roof, spun hubs, in the original blue all-card box, very good. *Sold for £55, Lacy Scott & Knight, March.*



↑ Dinky No 259 Fire Engine, red body and silver detailing, spun hubs in the original pictorial yellow all-card box, very good. *Sold for £45, Lacy Scott & Knight, March.*



↑ Corgi No 256 Volkswagen 1300 "East African Safari Trim", orange body, brown left hand drive interior, spun hubs, good. *Sold for £70, Vectis, April.*



↑ Corgi No 438 Land Rover (109WB), light metallic green, khaki plastic canopy with "Lepra" side decals, lemon interior, whizzwheels, black plastic tow hook, near mint. *Sold for £60, Vectis, April.*



↑ Corgi No 811 James Bond Moon Buggy, white, blue, red, yellow including wheels with "James Bond" figure, good plus. *Sold for £120, Vectis, April.*



↑ Dinky No 918 Guy "Eveready" Batteries for Life", blue body cab and chassis, red supertoy hubs, good. *Sold for £110, Vectis, April.*



↑ Dinky No 29f Observation Coach, grey body and ridged hubs, red flashes, excellent plus. *Sold for £110, Vectis, April.*



↑ Dinky No 450 Trojan "Esso" Van, dark red body, maroon ridged hubs, excellent. *Sold for £130, Vectis, April.*



↑ Dinky No 38a Frazer Nash BMW, grey body, blue seats, black ridged hubs, near mint. *Sold for £120, Vectis, April.*



↑ Dinky No 38d Alvis Sports Tourer, dark green body, black seats and tonneau, mid green ridged hubs with black smooth tyres, excellent. *Sold for £130, Vectis, April.*



← Corgi Juniors No 1011 James Bond Bobsleigh, yellow, grey plastic fender, with "James Bond" figure, mint. *Sold for £750, Vectis, April.*



↑ Corgi No 302 Hillman Hunter "London to Sydney Marathon Winner", blue body, black bonnet, grey interior, Golden Jacks take-off wheels, near mint. *Sold for £110, Vectis, April.*



← Dinky No 424 Commer Convertible Articulated Truck, lemon, blue plastic hubs with black treaded tyres, silver trailer with blue plastic hubs, black treaded tyres, tow hook - with 2 x detachable backs, near mint. *Sold for £260, Vectis, April.*



↑ Tekno No 415 Ford Taunus Transit (Type 2), "Tele" - orange body, off white interior, cast hubs, near mint. *Sold for £60, Vectis, April.*



↑ Tekno No 925 Mercedes 300SL, red body, clear plastic hood, white interior, near mint. *Sold for £100, Vectis, April.*



↑ Tekno No 920 Ford D Series "Falck Zonen" Recovery Truck, red cab, chassis and back, black interior, grey plastic wheels, near mint. *Sold for £70, Vectis, April.*

DIECAST
RESULTS

♦ **MAMOD SA1 Steam Roadster.** Appears unused. Excellent to mint in an excellent box with card outer box. **Sold for £100, UK Toy & Model Auctions, May.**



♦ **MAMOD TE1a Steam Tractor.** Appears unused. Excellent in an excellent box. **Sold for £65, UK Toy & Model Auctions, May.**



♦ **Taiyo Japan Tinplate Ford Fairlane Police Car.** Battery operated (requires 2x 'D' batteries – not tested). Good plus to excellent (light scratches on roof) in a good plus to excellent box with inner packing pieces. **Sold for £70, UK Toy & Model Auctions, May.**



♦ **Shackleton Foden FG6 Tipper Truck.** Smoke grey with red wings and smoke grey tipper body base. Complete with key, tipper handle and spanner. Excellent in a good brown lid box. **Sold for £750, UK Toy & Model Auctions, May.**



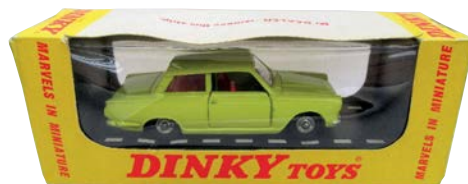
♦ **Shackleton Foden FG6 Flatbed Truck.** Yellow with red wings. Complete with leaflet, key, screwdriver and spanner. Excellent in a good plus box. **Sold for £650, UK Toy & Model Auctions, May.**



♦ **Shackleton Foden FG6 Flatbed Truck.** Green with red wings. Complete with maintenance key and spanner. Good in a replacement inner box with a fair box lid. **Sold for £550, UK Toy & Model Auctions, May.**



♦ **Scratch built 1957 Foden FG6/15 'Blue Circle Cement in Bulk'.** 43cm in length. Excellent in a good plus to excellent custom made display case (Perspex top does have a couple of cracks in it). **Sold for £400, UK Toy & Model Auctions, May.**



♦ **Dinky Toys 133 Ford Cortina,** yellow body, red interior. Excellent plus in an excellent presentation box with 'Mr Dealer' card attached. **Sold for £120, UK Toy & Model Auctions, May.**



♦ **Dinky Toys 171 Austin 1800,** pale blue body, red interior. Excellent plus in an excellent presentation box with 'Mr Dealer' card attached. **Sold for £120, UK Toy & Model Auctions, May.**



♦ **Shackleton Foden FG6 Flatbed Truck,** yellow with red wings. Complete with key and spanner. Good (paint cracking on body) in a fair to good box (extensive tape repair to lid). **Sold for £600, UK Toy & Model Auctions, May.**



♦ **Shackleton Foden FG6 Tipper Truck.** Pale green with red wings, red tipper body base. Complete with key, tipper handle and spanner. Good plus to excellent in a poor to fair box. **Sold for £750, UK Toy & Model Auctions.**



♦ **Corgi Toys GS-21 ERF Dropside Lorry & Platform Trailer,** with milk churns plus partially used decal sheet. Good plus to excellent in a good plus to excellent box and inner tray. **Sold for £190, UK Toy & Model Auctions, May.**



**ONLY
£6.99
+P&P**

TOY COLLECTORS PRICE GUIDE 2018
BUY YOUR COPY TODAY BY
simply calling us on 01778 392480.

S
1840

SheffieldAuctionGallery

1840 antique & fine art auctioneers & valuers

the saleroom
The home of art & antique auctions

Specialist Collectable Toys & Live Steam Auction



Auction Thursday
28th June at 10am

Entries invited for
future auctions...

Viewing Wednesday 27th 9am to 4:45pm and Sale Day from 8:30am

A very good, interesting auction of 700+ Lots including: engineered & toy shop live steam, 19th century and later including traction engines, locomotives and stationary engines. Extensive boxed and unboxed Diecast including Dinky Corgi & Matchbox, Extensive Boxed Modern Diecast including a collection of plant vehicles and a single owner collection of Range Rover models, Model Railway including O, OO & HO Gauges, Tinplate including pre and post-war and many more associated Toys & Games.



A 3.5" Inch Gauge 4-6-2 Live Steam Locomotive and Tender 'Brittania'

Contact Specialist Valuer John Morgan for more information. Next Specialist Collectable Toys Auction is on Thursday 9th August.

jmorgan@sheffieldauctiongallery.com

0114 281 6161

www.sheffieldauctiongallery.com

Windsor Road, Heeley, Sheffield, S8 8UB



New Logo - Same Company

We're making a few changes to our logo and website, but everything else stays the same:

- Knowledgeable
- Trustworthy
- Experienced
- Specialist
- Good Sales Record
- Prompt payouts

NEXT AUCTION 7th July

Same Venue:

The Village Hotel, Elstree WD6 3SB

FREE Tea and Coffee for those joining us in the saleroom

212

A large public auction of Trains, Diecast Models, Model Soldiers and other toys

Sale date: 18th July 2018

at Court House, Warwick

Visit our website to view the catalogue
Complimentary printed sale catalogue on request



Warwick & Warwick

Warwick & Warwick Ltd.
Auctioneers and Valuers

Chalon House, Scar Bank, Millers Road,
Warwick CV34 5DB

Tel: 01926 499031 Fax: 01926 491906

E-mail: richard.beale@warwickandwarwick.com

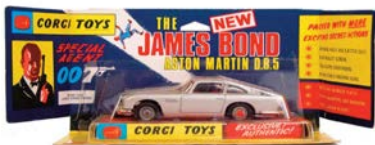
www.warwickandwarwick.com



EAST BRISTOL
AUCTIONS

BRISTOL'S
LARGEST
AUCTION
HOUSE

**CONSIGNING
NOW FOR
SPECIALIST
TOY AUCTION**



WORLD RECORD Corgi James Bond Aston Martin - **£1050**



Lego UCS Millennium Falcon - **£1,800**



'George' a 1908 Steiff Teddy Bear - **£1,900**



3 1/2" Gauge Bantam Cock Locomotive - **£1,500**

Stacey's

Auctioneers & Valuers since 1947

Now accepting consignments for our next Specialist Toy & Model Auctions!

Monday 25th June 2018

(Deadline to consign: 8th June 2018)

Monday 22nd October 2018

(Deadline to consign: 12th October 2018)

Free Valuations at our office and home visits available.



01268 777122 info@staceyauction.com

www.staceyauction.com

Essex Auction Rooms, 37 Websters Way, Rayleigh, Essex, SS6 8JQ

Telephone: 0117 967 1000
Email: info@eastbristol.co.uk
www.eastbristol.co.uk

WHAT'S IN YOUR ATTIC?

1 Hanham Business Park, Memorial Road, Hanham, Bristol BS153JE



LIVE ONLINE BIDDING

WESSEX AUCTION ROOMS
— AUCTIONEERS & VALUERS —

Viewing Thursday 28th June from 10am-7pm and from 9am on sale day

TOY AUCTION

Die-cast, Model Rail, Star Wars, 1980's Action Figures, Dolls, Teddies and much more
Friday 29th June 2018 at 10.30am

Westbrook Farm
Draycot Cerne
Chippenham
Wiltshire
SN15 5LH
01249 720888

www.wessexauctionrooms.co.uk
enquiries@wessexauctionrooms.co.uk

A full catalogue will be available to view on our website



Entries wanted for our forthcoming auctions

LACY SCOTT
& KNIGHT

Chartered Surveyors
Land & Estate Agents
Auctioneers & Valuers

Bury St Edmunds
01284 748600
www.lsk.co.uk

ENTRIES INVITED

Toy and Collectors Models Auction

18th August 2018

Sale includes Live Steam and Sundry Related Items, All Gauges of Model Railway & Railwayana, Diecast Models Incl. Corgi, Dinky, Matchbox, Tinplate and Triang, Juvenalia, Britains & Plastic Kits etc.

Entries Close four weeks prior to sale



Enquiries: Oliver Leggett
oleggett@lsk.co.uk or 01284 748623

Strong foundations. Exciting future



Established 1840
Anderson & Garland
Auctioneers



TOY AUCTION THURSDAY 12TH JULY

**FURTHER ENTRIES
ARE INVITED**

at **10am**

Viewing

Mon 9th July - 9.15am - 6.30pm

Tues 10th July - by appointment

Wed 11th July - by appointment

Closing date:

Friday 22nd June

Sale to include

Matchbox and Dinky die-cast vehicles; Model railway locomotives, rolling stock & accessories; Meccano; Teddy Bears & Dolls; Collectable toys from the 60's, 70s, 80s & 90s; & TV and film related toys etc.

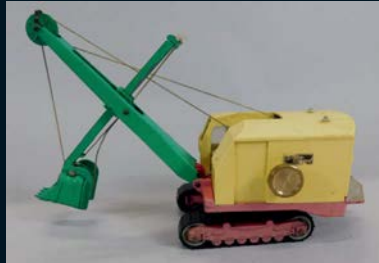
For more information contact us on

0191 430 3000 or email **info@andersonandgarland.com**

**TO ADVERTISE HERE IN THE NEXT ISSUE
PLEASE CALL KRISTINA ON 01778 392096
OR EMAIL HER AT
KRISTINA.GREEN@WARNERSGROUP.CO.UK**



EST
1864
GOLDING YOUNG



**Toying with the idea of selling?
Three Live Webcast sales a month**

Entries now invited

*The Bourne Auction Rooms host a quarterly
Automobilia, Toys and Trains sale*

The Bourne Auction Rooms
T: 01778 422686
E: bourne@goldingyoung.com
BRM Buildings, Spalding Road,
Bourne, PE10 9LE

The Grantham Auction Rooms
T: 01476 565118
E: grantham@goldingyoung.com
Old Wharf Road, Grantham,
NG31 7AA

The Lincoln Auction Rooms
T: 01522 524984
E: lincoln@goldingyoung.com
Thos Mawer House, Station Road,
North Hykeham, Lincoln, LN6 3QY



CHARTERED AUCTIONEERS & VALUERS • ARTS & ANTIQUES SURVEYORS

goldingyoung.com

At the Chalk face

Alwyn Brice attended the latest venue for the London Toy Soldier Show.

Chalk Farm is one of those olde worlde Tube stations that doesn't seem to have caught up with the 21st century. An ideal jumping off point, then, for the London figure show, which is literally a hundred yards up the road.

Guideline has taken this event, until recently in Islington's Design Centre, to a school setting – and the exhibitors that I spoke to love it. No steps or escalators, easy access and plenty of parking – what else do you need?

It was busy in March, and it wasn't just the English peddling their wares – I spoke to French and Spanish people, too. Alymer's Antonio Marti Cusido had come over from Valencia to show some of his 54mm figurines. He purveys both toy (gloss-painted) examples as well as others finished in a most realistic collectors' style. Both types sell well, he told me, with gloss taking the edge. I was fascinated by his diorama accessories, to wit two sections of WW1 trench and a lovely stonework corner of a Spanish castle from maybe the 17th century. These were in 54mm scale and £30 and £45 respectively; he can also supply arches, walls and pillars.

Philippe Ligeard had what was undeniably the star of the show. In a shallow glass-fronted tray he had a selection of 50 or 60mm flat pewter English knights that would have originated in Germany. Modified and then painted by a skilled (French) hand, this selection displayed the



ABOVE Marx six inch figurines front a battalion in ceramic, of unknown foreign manufacture.



ABOVE Forward chaps! Roman tortoise formation was spotted at the Irregular Miniatures stall, which was covered in unpainted castings of all eras

armorial colours of English knights of the Middle Ages. The handiwork was breathtaking – when you come across real skill in flats, then you have to stop and stare. The lot would have set you back about £450 but what a glorious set to own. In contrast, his Elastolin Roman 7cm foot figures were £10 a time, with the mounted Romans coming in at £25.

Back on home soil, John Begg showed me some Del Prado painted resin figures. These are very collectable, well detailed and not expensive – and his examples were of the French Foreign Legion, which originally were only obtainable in France. At £7 each they seemed a good buy, given they are rare over here. There were more cheap collectables on the Sholti Modelli stand: its proprietor is more known for his miniature diecasts but this time around he had shelves groaning with figures in both metal and plastic. You cannot go wrong with Marx six inch figures at just £3.50 each; and his ceramic Napoleonic subjects, of foreign extraction, were different, to say the least. At £10 they were inexpensive, though.

Leaving his dental tool selection (!), I moved on to the doyen of the Napoleonic Wars – Dave Freeman. Until recently he ran a shop called Bonapartes in Bath, a real treasure trove of things First Empire, but sadly now he trades from home. He makes his own 90mm figures, some of which were present in dioramas: a stunning depiction of the retreat from Moscow

Stunning, shop fresh example of the Crescent Searchlight party: where does this stuff come from?



was beautifully executed, but was not for all pockets at £700. Plenty of books adorned his stand, including a lovely Osprey slip-cased example of the Peninsular War Atlas, which I just had to add to my own Napoleonic book collection.

Old stock turns up regularly at this event: witness the numerous Lasset metal figures, mostly German WW2, on Anne Randall's stall. Well detailed and awaiting a paint brush, these were just a fiver a go. Rose Minipacks, again unpainted but bagged, were similar money. Some Series 77 miniatures caught my eye at £20 each whilst Tradition castings were £5-6 a time. She also had old stock examples from Hinton Hunt, Stadden and Hinchliffe.

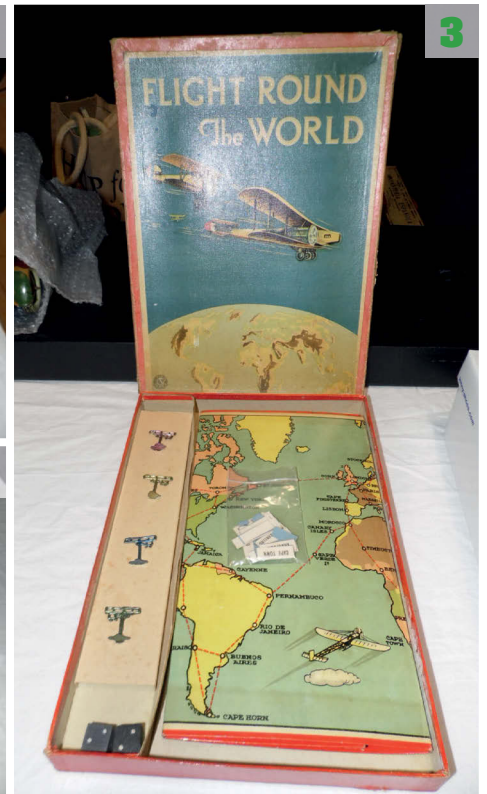
Aside from metal, there was plenty of plastic at the show. A set of Herald Cowboys in a window box for £30 is about the going rate – and there was an accompanying set of Indians at the same money on Fred Barrett's stall. His Rose Miniatures Sack of Rome set of metal castings was painted up quite well, and for this little lot he was asking £200.

Steve Viccars had the most plastic on the day, though, and he'd brought along Airfix, Britains, Speedwell and Charbens, to name just four makers. A number of bagged Airfix Series 1 biplanes caught my eye (these featured Roy Cross artwork) at £12 a

time; whilst a Britains lead Landing Party set, in a rough box, was somewhat unusual: it bore an early label so would have dated from the 1920s. Arguably his best toy was the clockwork tinplate Arnold jeep, which was working (albeit minus its key) and with the full complement of troops: lacking a box, it was a reasonable £125.

What else? Adrian Little tends to deal in lead and hollowcast and he had a superb Crescent Searchlight set. With a trio of ARP chaps, the lot was in an excellent box from the 1950s. For this he was looking at £185. Equally desirable was a boxed set of animals from Wend-Al: they were all strung on to the backing card and the box, too, was excellent. For games lovers, his Chad Valley (1920s?) Flight Around the World was in lovely condition and contained some tiny metal biplanes, tokens and a brace of wooden dice. Sheer nostalgia, albeit at a whisker under £200.

I'll close with Gareth Morgan, whose Morgan Miniatures range will be known to some readers. From Aztecs he's now moved into the Norman era, the 11th century, and these figures sell well in Europe, he told me. Some interesting little wagons and carts, made in wood, were also for sale from this period and were modestly priced at £10-15 a time. ■



- 1 David Freeman's superb large scale snapshot of Napoleon's retreat from Moscow even looked cold!
- 2 A good example of a boxed set of aluminium animals from Wend-al.
- 3 Old games, especially with an aviation theme, are popular - but you'd have needed deep pockets for this Chad Valley version.
- 4 Great camouflaged armoured car looked like Wells Britmtoy but was, in fact, from German company Arnold.
- 5 The box had seen better days but Steve Viccars' Britains Landing Party was all there.

Successful vintage fair

Ann Evans visited the recent Barry Potter fair in Rugby and got a history lesson on pre-War collectables.

Photos by Rob Tysall.

Barry Potter's popular vintage toy fair took place once again at the Benn Hall, Rugby on Saturday 28 April, bringing in a steady stream of collectors and toy enthusiasts throughout the day.

Around 90 stands filled the halls, laden with all manner of tinsplate, clockwork, diecast, military figures, books, TV related collectables and much more. As always there was a wide variety of toys and especially lots for railway fans to browse. You could find boxed and unboxed locos, carriages, rolling stock, rails and accessories in their various scales made by all the different manufacturers. Prices ranged from bargain boxes of pocket money toys to top of the range collector's items for the serious toy enthusiast.

This was the range of toys on Tony Taylor's stand. He was concentrating on pre-First World War collectables and amongst the interesting and rare items he had on display were toys manufactured by Bing and the French company, Carette. As readers may know, Georges Carette (1861-1954) began by making tinsplate toys, co-founding with the Bing brothers.

Carette moved from France to Nuremberg Germany in the late 19th century, and then back to France with the outbreak of the first world war. Eventually, Georges struck

up a working relationship with Bassett-Lowke to supply models for the British Market. But by 1918 further wartime legislation had taken Carette into liquidation. Bassett-Lowke continued manufacturing the toys Carette had been supplying, using their tooling.

Tony had a great display of early Carette toys including two tinsplate cars dating from 1904-5 with the asking prices of £950 and £1,200. There was a wind-up submarine that sinks and was still in good working order, with a £600 price tag. A Bing ocean liner from 1910-1920, with the asking price of £2,500.

Chatting about the toys Tony showed the *Gazette* team of Ann and Rob a Carette Dreadnought battleship, with a price tag of £1,000. "The ship comes straight at you, fires its missiles and then turns around and goes away."

He also had some wonderful old trains. "The green Marklin Great Bear is as rare as anything. This was made between 1908-1910. I bought the signals 40 years ago and have never seen any others like them. They were produced by Bing around the time of the First World War.

The railway stations were made by Bing around 1905-6. You would put candles inside and the smoke would come out of the chimneys. I'm asking £450 for this one."

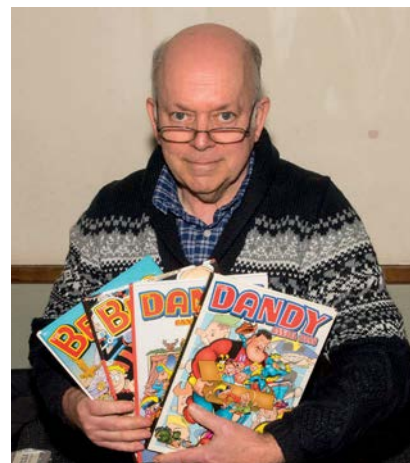
Helping to make it an enjoyable show, there was



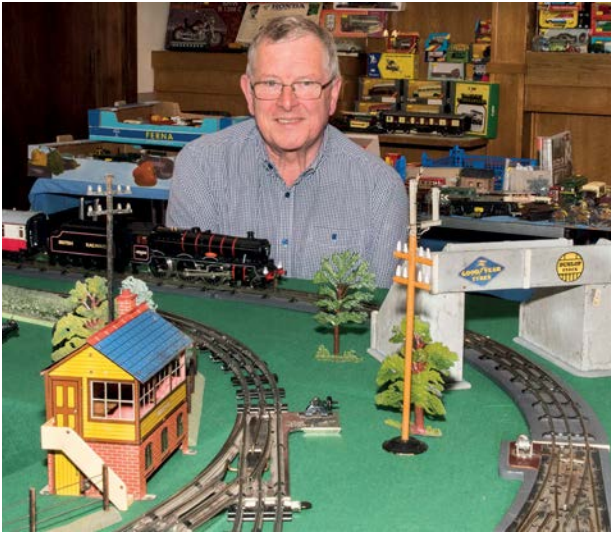
ABOVE Crowds enjoying the fair.



ABOVE James Hall and son Christopher who travelled from the north east for the fair.



ABOVE Martin Preston is hoping to find buyers for his mint Beano and Dandy annuals.



ABOVE ACE trains Steve Guest of the Maldon Rail Centre.



ABOVE The Green Hornet.

an O gauge train layout, put on by Steve Guest of Maldon Rail Centre, Maldon, Essex. Steve explained, "I buy and sell ACE trains and up until fairly recently I also used to make the 3-rail track." His display was attracting lots of attention from visitors.

During the morning, organiser Barry Potter drew visitors' attention to Christine Sanderson who was at the fair telling people about the fascinating house known as 78 Derngate in Northampton. This house was owned by Wenman Joseph Bassett-Lowke who commissioned the famous architect Charles Rennie Mackintosh to design it. Christine has been part of the 78 Derngate team from the start and is a Bassett-Lowke expert and enthusiast. She was launching her new book *Bassett-Lowke Art, The Making of an Identity* at the toy fair.

It was a first visit to Barry's Vintage Fair for James Hall and his son Christopher who have been dealing in toys for around five years. The father and son

team had travelled from the North East coast of Sunderland and Newcastle for the fair. Christopher, who is a big James Bond enthusiast jokingly said, "Ever since I was a kid he's been dragging me around these events. We thought we'd give this one a try."

On their tables they had an interesting variety of diecasts, Action Man, TV related toys, military and more. Amongst their treasures was a pristine boxed Corgi Green Hornet car 'Black Beauty' crime fighting car which they were asking £240 for. Also, a pristine and boxed Corgi model of The Professionals Ford Capri with figures of Bodie, Doyle and a baddie. They were hoping to get £95 for this model.

If you're a fan of the *Beano* and the *Dandy*, then get in touch with Martin Preston via Barry Potter. Martin has a number of new, mint condition *Beano* and *Dandy* annuals that he wants to sell. They date back to 2000 and are priced at just £1.50 each. He'll be back at Barry's September fair with the remainder of the books. ■



ABOVE A Carette for Bassett-Lowke L & NWR loco, carriage and guards van.



ABOVE A 'Precursor' 513 loco, made by Bing for Bassett-Lowke, 1912-15.



ABOVE Carette vintage cars 1904-5.



ABOVE A Bing Ocean Liner and a Carette Dreadnought.

Further details ...

- For details of Barry Potter's Toy Collectors Fairs and information about future events visit www.bpfairs.com

**MEET THE STARS OF FILM & TV
OVER 100 GUESTS ALREADY CONFIRMED!**



27 - 29 JULY OLYMPIA

LONDON FILM & COMIC CON

WWW.LONDONFILMANDCOMICCON.COM





www.j-jwebbtoyfairs.com
01522 880383



HUNTINGDON SUNDAY 24TH JUNE

Int. Indoor Arena, Kings Bush Centre, Wood Green Animal Shelters, London Rd, Godmanchester PE29 2NH. 10am - 2.30pm >> approx. 230 pitches >> 6ft pitch £30 >> Ad £3, Sen £2.50, 1st Ch £2

BRENTWOOD SATURDAY 30TH JUNE

International Hall, Brentwood Centre, Dodinghurst Road, Brentwood, Essex, CM15 9NN 10am - 2.30pm >> approx. 200 pitches >> 6ft pitch £30 >> Ad £3, Sen £2.50, 1st Ch £2

SPALDING SUNDAY 8TH JULY

Springfields Events & Conference Centre, Camelgate, Spalding, Lincs PE12 6ET 10am - 2.30pm >> approx 150 pitches >> 6ft pitch £30 >> Ad £2.50, Sen £2, 1st Ch £1.50

LINCOLNSHIRE SUNDAY 15TH JULY

The Exhibition Centre, Lincolnshire Showground, Lincoln, LN2 2NA 10am - 2.30pm >> approx. 200 pitches >> 6ft pitch £30 >> Ad £2.50, Sen £2, 1st Ch £1.50

HUNTINGDON SUNDAY 2ND SEPTEMBER

Int. Indoor Arena, Kings Bush Centre, Wood Green Animal Shelters, London Rd, Godmanchester PE29 2NH. 10am - 2.30pm >> approx. 230 pitches >> 6ft pitch £30 >> Ad £3, Sen £2.50, 1st Ch £2

SPALDING SUNDAY 9TH SEPTEMBER

Springfields Exhibition Centre, Camelgate, Spalding, Lincs PE12 6ET 10am - 2.30pm >> approx. 150 pitches >> 6ft pitch £30 >> Ad £2.50, Sen £2, 1st Ch £1.50

For bookings and further information please telephone Lorraine on **01522 880383**

Email: jandjfair@virginmedia.com

WALLIS & WALLIS

Est 1928
The Specialist Auctioneers

Investments in memories

Results from our latest sales



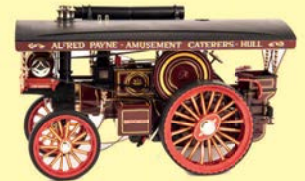
Gauge One DB 2-8-4T locomotive by Kiss Modelbahnen sold for £1,300



Britains Ltd. Civilians set No.168 sold for £700



Gilco Road Signs set No.2 sold for £90



1:24 scale Burrell Showman's Engine by Midsummer Models sold for £140

Join us for our next auction Monday 23 July

All our auctions are live online with

the saleroom
The home of art & antiques auctions

Online Bidding **invaluable**
powered by

wallisandwallis.co.uk

West Street Auction Galleries, Lewes, Sussex, BN7 2NJ

Tel: 01273 480208 • Fax: 01273 476562 • toys@wallisandwallis.co.uk

RAY HEARD TRAIN & TOY FAIRS

NEWTON ABBOT SUNDAY 24TH JUNE

Newton Abbot Racecourse, Devon, TQ12 3AF

- Admission: £2
- Times: 10am to 3.30pm
- Free car parking
- Refreshments available
- 160 tables
- 60+ traders

EXETER SATURDAY 18TH AUGUST

Matford Centre, Matford Park Road, Exeter, EX2 8FD

- Admission £2
- Times: 10am to 3.30pm
- Free car parking
- Refreshments available
- 200+ tables
- 75+ traders

For more information please contact Ray Heard on **01823 480097**

SRP TOYFAIRS

CRAWLEY, W. SUSSEX

SATURDAY 16 JUNE 10am - 2pm

THE HAWTH THEATRE, HAWTH AVENUE, CRAWLEY, RH10 6YZ

WORTHING, W. SUSSEX

SUNDAY 17 JUNE 10am - 2pm

CHARMANDEAN CENTRE, FOREST ROAD, WORTHING, BN14 9HS

ORPINGTON, KENT

SUNDAY 24 JUNE 10am - 2pm

CROFTON HALLS, ORPINGTON, KENT, BR6 8PR

MIDHURST, W. SUSSEX

SUNDAY 1 JULY 10am - 2pm

THE GRANGE, BEPTON ROAD, MIDHURST, WEST SUSSEX, GU29 9HD

WORTHING, W. SUSSEX

SUNDAY 15 JULY 10am - 2pm

CHARMANDEAN CENTRE, FOREST ROAD, WORTHING, BN14 9HS

ORPINGTON, KENT

SUNDAY 22 JULY 10am - 2pm

CROFTON HALLS, ORPINGTON, KENT, BR6 8PR

BOREHAM, ESSEX

SUNDAY 29 JULY 10am - 2pm

NEW HALL SCHOOL, WHITE HEART LANE VIA GENERALS LANE, BOREHAM, CM3 3HS

RAYLEIGH, ESSEX

SUNDAY 26 AUGUST 10am - 2pm

SWEYNE PARK SCHOOL, RAYLEIGH, ESSEX SS6 9BZ

BEXHILL-ON-SEA, E. SUSSEX

SATURDAY 1 SEPTEMBER 10am - 2pm

ST BARNABAS PARISH CHURCH, CANTELUPE ROAD, BEXHILL-ON-SEA, TN40 1JG

HERNE BAY, KENT

SUNDAY 9 SEPTEMBER 10am - 2pm

THE KINGS HALL, THE BEACON HILL, HERNE BAY, KENT, CT6 6BA

srptoys1@hotmail.co.uk www.srptoysfairs1.co.uk
FOR MORE INFORMATION CONTACT: PAULA AND GERRY ON 07739 998012

SUPER SAVER OFFER

SUBSCRIBE AND SAVE OVER 25%

The UK's best-selling diecast magazine - more models reviewed than anywhere else PLUS all the latest news, valuations and model launches!

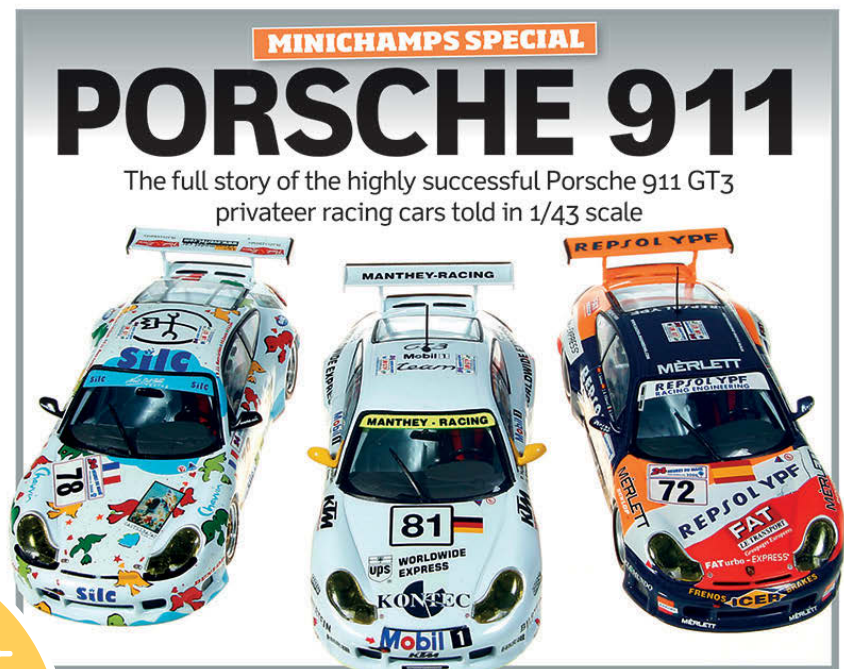


Why subscribe?

- **SAVE TIME & MONEY** – there's no need to travel to the shops.
- **FREE DELIVERY** to your door every month.
- **ALL YEAR ROUND DEALS** start saving today.

Our special Direct Debit offer means that you...

Pay just **£9.99** per quarter



COLES MOUNTED

ANE

L was classic sky crane used upon?



» MIDLAND RED COACH

Explore the models of BMMO's ground breaking C5 motorway coach



01778 392006 • www.diecast-collector.co.uk

Quote **GAZ/DCC/SUBS18**. Subscription price available until 31.12.18

WALLIS & WALLIS Est 1925
The Specialist Auctioneers

8 auctions every year -

live online with **the saleroom**
The home of art & antiques auctions

Online Bidding **invaluable**
powered by

wallisandwallis.co.uk

West Street Auction Galleries, Lewes, Sussex, BN7 2NJ
• Tel: +44 01273 480208 • toys@wallisandwallis.co.uk • Fax: +44 01273 476562

TOY, TRAIN & SCI FI FAIR

CATTERICK GARRISON
Catterick Garrison Leisure Centre, Gough Road, DL9 3EL
Sunday 24th June
11am - 3pm
• Admission: Adults £3.00, Children/Senior Citizens £2.00, Early Bird £5
• Buy, sell and swap trains, diecast cars, buses and trucks, soldiers and more!
• Free parking, working exhibitions and cafe facilities
Interested in selling your collection or want a table to sell your stock?
Contact Jim on 07504 035955 or email: jim_corr73@hotmail.co.uk

CHESTER LE STREET
Lord Lawson Academy, Birtley Lane, Birtley, DH3 2LF
Sunday 2nd September
10am - 3pm
NEW VENUE!

TOY & TRAIN FAIRS

ASHFIELD
Sunday 22nd July 2018
10am - 3pm
Kirkby-in-Ashfield, Festival Hall, NG17 7DJ
Good access / refreshments / free parking
Next date: 30th September 2018

BURTON UPON TRENT
WEDNESDAY 25th July 2018
6.30pm - 8.30pm
The Town Hall, Burton-upon-Trent, DE14 2EB
Always a good selection of rail and diecast
Next date: 26th September 2018

ALFRETON
Friday 7th September 2018
7pm - 9pm
The Leisure Centre, Church Street, Alfreton
DE55 7BD
One of the longest established swapmeets.
Next date: 16th November 2018

NOTTINGHAM
Saturday 13th October 2018
10am - 2pm
Bluecoat Academy, NG8 5GY
On ring road, 1½ miles north of Q.M.C
Free car parking/light refreshments
Next date: 1st December 2018

Accompanied u / 16's FREE at all our fairs
Speak to Malc on 07951 072790 • www.tttf.co.uk

Bulldog Fairs
Great Toy Collectors Fairs in the Southwest of England

Shepton Mallet
Royal Bath & West Showground BA4 6QN
Giant Toy & Train Collectors Fair
Sunday 24th June
10.30am--2.30pm
Adults £4.00 each
under 16yrs free with an adult
Early Bird from 08.30 £10.00
1000's of Collectable toys for sale

LEGO

ACTION MAN **DINKY TOYS**

Model Railways

Action Figures

TV & Film related models
Old and modern collectables: DINKY**CORGI**SPOT-ON**HORNBY
MAINLINE**MARKLIN**LEGO**DOLLS AND TEDDIES **Star wars **** 10000's more

Probably the Best Toy Collectors Fairs in the West
Call us on 01373 452857 or 07917 125641
Email: bulldogfairs@aol.com
web site: www.bulldogfairs.com

BLUEBELL RAILWAY

Saturday 28th July

10am - 4pm
Horsted Keynes Station,
Station Approach, Horsted
Keynes, East Sussex,
RH17 7BB

Admission by platform ticket or
free with train travel ticket or
Bluebell membership card

For more details please call:
07866 641215

WIMBORNE
Model Toys & Trains Collectors Fair
Queen Elizabeth's Leisure Centre (Sports Hall),
Blandford Road (B3082), Wimborne Minster, Dorset,
BH21 4DT

Sunday 1st July 2018
10.15am - 2.30pm
Large FREE Car Park and refreshments
Enquiries to Dave on (01202) 590158

GARSTANG

Tuesday 26th June 2018
From 6.00pm
Future date: Tuesday 31st July
KIRKLAND AND CATTERALL MEMORIAL
HALL, PR3 OHR Corner A6 and A586
Tel: 01282 439009

CHRIS DYER FAIRS
TOY & TRAIN FAIRS FORTHCOMING EVENTS

CARMARTHEN 85 TABLES
Saturday 23rd June
10.30am - 3pm
Carmarthen Leisure Centre, Llansteffan Road,
Johntown, Carmarthen SA31 3NQ
Admission £2

OSWESTRY 70 TABLES
Saturday 30th June
10.30am-3pm
The Pavilion, Oswestry Showground,
Park Hall, Oswestry, Shropshire SY11 4AS
Admission £2

COLWYN BAY 80 TABLES
Sunday 1st July
10.30am-3pm
Colwyn Bay Leisure Centre, Eirias Park,
Colwyn Bay, Conwy LL29 7SP
Admission £2

PORTHMADOG 60 TABLES
Sunday 15th July
10.30am-3pm
Y Ganolfan Community Centre, High Street,
Porthmadog, N.Wales, LL49 9LU
Admission £2

Tel: 01643 702757 / 07966 694579 www.chrisdyerfairs.co.uk

MERSEYSIDE HOBBIES & MODEL RAILWAY SHOW

SATURDAY, 7th JULY, 2018
10.30 a.m. to 3.30 p.m.
Hulme Hall, Port Sunlight, Wirral CH62 5DH
(off the A41 - in the beautiful village of Port Sunlight) - Admission Adults £4.50 Children £1.00

ADVANCE NOTICE
SUNDAY, 14th OCTOBER, 2018
NEW EVENT LEIGH **NEW EVENT**
LEIGH SPORTS CENTRE,
Sale Way, (off Atherleigh Way) Leigh WN7 4JY
10.30 a.m. to 2.30 p.m.
UP TO 75 STANDS - Admission: Adults £2.00 Children 50p

ENQUIRIES BARRY STOCKTON
0151-334 3362
www.barrystocktonfairs.co.uk

Steven Clements Fairs

EASTLEIGH
Sunday 17th June
10.00am - 2.00pm
Barton Peveril Sixth Form College,
Chestnut Avenue, Eastleigh,
SO50 5ZA

WOOTTON BASSETT
Tuesday 19th June
6.30pm - 8.30pm
Memorial Hall, Station Road,
SN4 7EN
• Free parking • Excellent cafe

GLOUCESTER
Saturday 23rd June
10.00am - 2.00pm
Churchdown Community Centre,
RG27 9NN
• Refreshments

HOOKE
Tuesday 10th July
6.30pm - 8.30pm
Hook Community Centre, RG27 9NN
• New venue with huge car park

THATCHAM
Thursday 19th July
6.30pm - 8.30pm
Thatcham Catholic Hall, Bath Road,
RG18 3AG
• Refreshments • Free parking

WILTON
Sunday 29th July
10.00am - 2.00pm
Michael Herbert Hall, South Street,
Wilton, SP2 0JS

Table and chair hire is also available for your event. Please email or call for a quote!
For details and bookings call 01380 725322 or 07958 101891 • Email: clementfairs@aol.com

EVENT GUIDE

FAIRS

16 JUNE 18

- **Crawley**, SRP Toy Fairs, 07739 998012
- **Alresford**, National Festival of Toy Trains, 01962 733475

17 JUNE 18

- **Worthing**, SRP Toy Fairs, 07739 998012
- **Stafford**, Barry Potter Fairs, 01604 846688
- **Eastleigh**, Steven Clements, 01380 725322

19 JUNE 18

- **Wootton Bassett**, Steven Clements, 01380 725322

23 JUNE 18

- **Carmarthen**, Chris Dyer Fairs, 01643 702757
- **Gloucester**, Steven Clements, 01380 725322

24 JUNE 18

- **Orpington**, SRP Toy Fairs, 07739 998012
- **Newton Abbot**, Ray Heard, 01823 480097
- **Catterick Garrison**, Jim Corr, 07504 035955
- **Huntingdon**, J & J Webb, 01522 880383
- **Shepton Mallet**, Bulldog Fairs, 01373 452857

26 JUNE 18

- **Garstang**, Janet Pearson, 01282 439009

30 JUNE 18

- **Oswestry**, Chris Dyer Fairs, 01643 702757
- **Brentwood**, J & J Webb, 01522 880383
- **London**, The London

Toy Soldier Show, 01908 274433

1 JULY 18

- **Wimborne**, David Rees, 01202 590158
- **Colwyn**, Chris Dyer Fairs, 01643 702757
- **Midhurst**, SRP Toy Fairs, 07739 998012
- **Bowburn**, Frank Philips, 07774 844294
- **Coventry**, Barry Potter Fairs, 01604 846688
- **Falkirk**, McLaren Models, 01324 624102

4 JULY 18

- **Hertford**, Joe Lock, 07866 641215

7 JULY 18

- **Wirral**, Barry Stockton, 0151 334 3362
- **Cardiff**, Chris Dyer Fairs, 01643 702757

8 JULY 18

- **Spalding**, J & J Webb, 01522 880383
- **Bexhill-On-Sea**, SRP Toy Fairs, 07739 998012
- **Doncaster**, Barry Potter Fairs, 01604 846688

10 JULY 18

- **Hook**, Steven Clements, 01380 725322

14 JULY 18

- **Hoddesdon**, Joe Lock, 07866 641215

15 JULY 18

- **Porthmadog**, Chris Dyer Fairs, 01643 702757
- **Lincoln**, J & J Webb, 01522 880383
- **Worthing**, SRP Toy Fairs, 07739 998012

18 JULY 18

- **South Croydon**, Joe Lock, 07866 641215

19 JULY 18

- **Thatcham**, Steven Clements, 01380 725322
- **Theydon Bois**, Joe Lock, 07866 641215

22 JULY 18

- **Ashfield**, Malcolm Townsend, 07951 072790
- **Orpington**, SRP Toy Fairs, 07739 998012

24 JULY 18

- **Tonbridge**, SRP Toy Fairs, 07739 998012

25 JULY 18

- **Burton Upon Trent**, Malcolm Townsend, 07951 072790

27 JULY 18

- **London**, London Film and Comic Con, www.london-filmandcomiccon.com

28 JULY 18

- **Horsted Keynes**, Joe Lock, 07866 641215
- **London**, London Film and Comic Con, www.london-filmandcomiccon.com

29 JULY 18

- **Aston Clinton**, Brian Chamberlain, 07864 640320
- **Boreham**, SRP Toy Fairs, 07739 998012
- **Wilton**, Steven Clements, 01380 725322
- **London**, London Film and Comic Con, www.london-filmandcomiccon.com

31 JULY 18

- **Garstang**, Janet Pearson,

01282 439009

AUCTIONS

15 JUNE 18

- **Poole**, Cottes, 01202 723177
- **Stockton-on-Tees**, Vectis, 01642 750616

19 JUNE 18

- **Newbury**, Special Auction Services, 01635 580595

20 JUNE 18

- **Stockton-on-Tees**, Vectis, 01642 750616

21 JUNE 18

- **Stockton-on-Tees**, Vectis, 01642 750616

23 JUNE 18

- **Newark**, Northgate Auction Rooms, 01636 605905
- **Mirfield**, Community of the Resurrection, jgribben@mirfield.org.uk

25 JUNE 18

- **Essex**, Stacey's Auctioneers, 01268 777122

26 JUNE 18

- **Stockton-on-Tees**, Vectis, 01642 750616

28 JUNE 18

- **M & M Auctions**, www.the-saleroom.com
- **Sheffield**, Sheffield Auction Gallery, 0114 2816161

29 JUNE 18

- **Wessex**, Wessex Auction Rooms, 01249 720 888

07 JULY 18

- **Elstree**, Excalibur

Auctions, 020 3633 0913

10 JULY 18

- **Newbury**, Special Auction Services, 01635 580595
- **Stockton-on-Tees**, Vectis, 01642 750616

11 JULY 18

- **Stockton-on-Tees**, Vectis, 01642 750616

12 JULY 18

- **Stockton-on-Tees**, Vectis, 01642 750616
- **Newcastle upon Tyne**, Anderson & Garland, 0191 430 3000

18 JULY 18

- **Warwick**, Warwick & Warwick, 01926 499031

19 JULY 18

- **Stockton-on-Tees**, Vectis, 01642 750616

20 JULY 18

- **Stockton-on-Tees**, Vectis, 01642 750616

22 JULY 18

- **Newbury**, Special Auction Services, 01635 580595

23 JULY 18

- **Lewes**, Wallis & Wallis, 01273 480208

24 JULY 18

- **Newbury**, Special Auction Services, 01635 580595

31 JULY 18

- **Newbury**, Special Auction Services, 01635 580595

For more event dates, news and models visit our website....

» www.ccof gb.co.uk



The Friends of Robert Barclay Academy Proudly Present Their **25th Annual**

MODEL RAILWAY EXHIBITION

Saturday 14th July

10.30am - 4.30pm

The Robert Barclay Academy, Cock Lane, Hoddesdon, Herts, EN11 8JY

OVER 20 LAYOUTS!

Quality trade stands including new and second hand model railways and vehicles, modelling accessories, books, DVDs, scenic materials, kits, tool and much more!

- Refreshments all day • Free parking on site
- All profits to Academy projects

Admission - Adults £4.50, Concessions £3.00
Family (2 + 2) £12.00

**For more details please call:
07866 641215**

Norman Joplin's

OLD TOY SOLDIER & FIGURE SHOW (UK)

**SATURDAY
8th September
2018**

**Holiday Inn
London,
Bloomsbury
Coram
Street,
London
WC1N 1HT**



This is a dateline show for old toy soldiers and civilian figures, pre 1980 vintage, lead, plastic, composition, aluminium etc.

Sponsored by Old Toy Soldier Magazine.

For further information please contact Adrian Little 07887 802932

HERTFORD

Wednesday 4th July

7pm - 9pm

Richard Hale School, Hale Road, Hertford, Herts.

SG13 8EN

Admission: £1

SOUTH CROYDON

Wednesday 18th July

6pm - 8pm

St John's Community Hall, Upper Selsdon Road, Selsdon, South Croydon, CR2 8DD

Admission: £1

THEYDON BOIS

Thursday 19th July

7pm - 9pm

Theydon Bois Village Hall, Coppice Row, Theydon Bois, Nr Epping, Essex CM16 7ER

Admission: £1

**For more details please call:
07866 641215**

Dealers in
Interesting Toys



www.mercatortrading.com

ASTON CLINTON TOY & TRAIN FAIR

(Org. Aylesbury Toyfairs)

Sunday 29th July

10am - 2.30pm

Green Park, Stablebridge Road, Aston Clinton, HP22 5NE ■ FREE PARKING

- Refreshments by 'Big Red Snack Vans'
- Supporting Thames Valley Air Ambulance

• Pocket money toys to top brands • Accompanied under 13's free

All enquiries call Brian 07864 640320

**TO ADVERTISE HERE IN THE NEXT ISSUE
PLEASE CALL KRISTINA ON 01778 392096
OR EMAIL HER AT
KRISTINA.GREEN@WARNERSGROUP.CO.UK**



CORGI • DINKY • HORNBY • WRENN • MECCANO • SCHUCO

TOY COLLECTORS PRICE GUIDE 2018

YOUR ESSENTIAL FIELD GUIDE TO CLASSIC TOY COLLECTABLES

£6.99 • www.ccofgb.co.uk

Produced in association with COLLECTORS PRICE GUIDE DIECAST

1000+ VINTAGE TOYS VALUED!



ALSO INSIDE
In-depth features on all your favourite collecting genres

Including...

- Diecast • Railways • Tinplate
- Toy figures • TV & Film memorabilia!

PLUS...

» RAILWAYS



From Hornby to Wrenn, we help value your locos

» TINPLATE



From bicycles to boats and buses, we have it covered!

» DIECAST



Hundreds of models from Dinky, Corgi and many more!

Order yours today at:

ccofgb.uk/tcpriceguide18

or by calling **01778 392480**

OUT NOW!

Toy Collectors Price Guide

YOUR ESSENTIAL FIELD GUIDE TO THE CLASSIC TOP TOY COLLECTABLES

- Packed with more than 100 pages featuring auction prices from the past year
- Dozens of results spanning across diecast cars, model railways, tinplate, toy soldiers or TV and film memorabilia
- In-depth features on a range of collecting topics
- Includes eBay advice – make sure you don't pay over the odds

O

bssolete

Z

Our monthly gaze into the weird but wonderful world of collector/dealer **Obsolete Oz**. Buying and selling since the 1970s, Oz has developed a great knack for unearthing some amazing finds from flea markets, antique fairs, car boot sales, rubbish skips and even the local tip.

Hi folks! Phew, what a scorching summer we are having so far. It's been so hot out there over the past couple of months that the boot sales have really been heaving with buyers and sellers.

A great crack of dawn discovery came my way over at a big boot sale on the East Coast the other day where a lovely yellow Lesney bulldozer suddenly appeared on a table right before my eyes. Needless to say it was soon in my hand and I was a very happy bunny to have bagged this classic diecast for a tenner. These early Lesney crawler tractors were first

a group of golfers on what looks like a typical Scottish links course. This tobacco was smoked in pipes rather than cigarettes in the days when pipes were enjoyed by millions of men. It's strange that you hardly ever see a pipe being smoked these days.

A fiver was all that was needed to scoop up a great little Daily Herald Bobby Bear Club enamel lapel badge. It dated from the early 1930s when 400,000 kids joined the Bobby Bear club. Bobby was based on a cartoon bear who first appeared in the Daily Herald in 1919, pre-dating Rupert by one year. He was actually based on a German Steiff bear and you can clearly

UK performing concerts in theatres and cinemas in front of their adoring fans. Great bits of pop music memorabilia from the swinging sixties.

Talking about the swinging Sixties I can still vividly remember that memorable day back in July 1966 when hat trick hero Geoff Hurst of West Ham United fired England to a memorable 4-2 victory over West Germany at Wembley Stadium. With the World Cup finals upon us once again this summer I thought I'd revive some of those fond memories by buying an original card signed by Geoff himself. It cost me twenty quid but what a great investment it might turn out to be?

million of these were sold during the 1953 Coronation year giving Lesney a massive financial boost.

Another memorable occasion in post-War history was the Festival of Britain, part of which was the Land Travelling Exhibition which stopped off at Birmingham, Nottingham, Leeds and Manchester. An original catalogue from this exhibition, which came in with a collection of old books, sold for fifteen pounds. It must have been a spectacular exhibition, full of all the great products we were exporting in the post-war boom years of British industry.

The 1950s was indeed a great boom time for Matchbox Toys and a nice little offering from them was a model of the popular Ford Prefect. In mint boxed condition and with grey metal wheels this classic didn't hang around very long soon selling for fifty five pounds.

Still lingering in the 1950s, happy memories of those magical summer holidays as a kid were revived by a British railways summer timetable dating from 1956 which sold for a tenner. Unfortunately this period also marked the beginning of the sad decline of our great railway network eventually resulting in the tragic decimation of branch lines, scrapping of locomotives and demolition of stations thanks to Dr Beeching's cuts!

Well that's about it for yet another month. Keep enjoying the summer and let's hope it turns out to be just like the one of 1976. Long and hot! As always, be lucky. **CG**

This tobacco was smoked in pipes rather than cigarettes in the days when pipes were enjoyed by millions of men. It's strange that you hardly ever see a pipe being smoked these days.

made in 1948 in an old derelict pub called the Rifleman on Union Row near Tottenham. Les and Rodney Smith rented the space from Charrington's Brewery for £2 per week. It was in superb condition and still complete with its original driver. Originally sold in Woolworths stores they were supplied in trade boxes containing a dozen in mixed colours.

Another lucky boot sale buy was a nice little 2oz Shieldall Cut Golden Bar tobacco tin from the Scottish Wholesale Society, snapped up for another well spent tenner. It shows a great picture of

see that distinctive Steiff pointed nose and the little button in his ear. It's a super badge made by Roden & Sons of London and is likely to find a home in my own collection.

I simply had to buy three plastic sweetheart brooches when I saw them on sale in a cabinet in an antique centre and managed to get all three for twenty quid. I remember these being on sale in the early 1960s outside concert venues and also used as cheap prizes on fairground booths. David Whitfield, Frankie Vaughan and Marty Wilde were all pop stars with huge fan bases as they toured the

On the selling front a Tudor Rose plastic tractor was soon snapped up by a keen tractor model collector willing to pay my asking price of £30. Dating from the 1960s, these tractors came in a variety of colours and are getting much harder to find these days. I can remember when you could buy them at jumble sales and in charity shops but those days have certainly gone now.

With the Royal Wedding still a hot topic of conversation I thought it would be a good time to sell a Lesney Royal State Coach and it soon found a new owner willing to hand over thirty five pounds. One



This Lesney Toy bulldozer was a fabulous find for lucky old Oz on an early morning search of a car boot sale. It dates from the late 1940s.

RIGHT

Reviving happy memories of railway travel in the 1950s, this British Railways Holiday Guide cost one shilling in 1956.



Not a bad little tin for a tenner. It once contained pipe tobacco sold by the Scottish Wholesale Society.



LEFT

Hat-Trick hero Sir Geoff Hurst poses proudly in his England shirt. His goals brought England victory in that unforgettable 1966 World Cup Final at Wembley Stadium.



Over 400,000 kids signed up to the Bobby Bear Club in the 1930s receiving one of these splendid enamel lapel badges.



ABOVE

Pick of the Pops in the early 1960s, these pop idol heart-throb brooches were mass produced by a London based company and sold outside concert venues.



ABOVE

The hugely popular Ford Prefect, No.30 in the Matchbox Series. This soon found a new owner willing to pay Oz's reasonable £55 ticket price.



ABOVE

A million seller in its day, this tiny diecast State Coach was in mint/boxed condition and found a buyer who handed over £35 for it.

The Land Travelling Exhibition visited four cities during the Festival of Britain in 1951. This original brochure sold for fifteen pounds.



COLLECTORS GAZETTE

TOP TIPS

DOUBLE TROUBLE

The sun is a lovely thing, but it also has its dangers. Firstly make sure your skin is protected whilst at sunny outdoor car boot sales and fairs. Secondly keep direct sunlight away from your collection as it can lead to serious fading of colour on models and boxes.



This plastic Tudor Rose farm tractor was snapped up by a keen tractor model collector eager to add it to his collection. These are becoming hard to find now say's Oz.

CLASSIFIEDS

SALES & EXCHANGE

RETAILERS

DEVON

KINGSBRIDGE ANTIQUES & CRAFT CENTRE - Holiday in South Devon this year? Then why not visit Kingsbridge Antiques & Craft Centre on the corner of Church Street & Ebrington Street TQ7 1DE, just 5 minutes walk from the Quay Car Park and the Bus Station. An ever changing stock of Antiques & Collectables including Toys & Models, Books & Militaria. Open Monday to Saturday. Tel: **01548 856002** Website: www.kingsbridgeantiques.co.uk

GLOUCESTERSHIRE

TEWKESBURY TOYMART. Vintage toys, bought, sold, exchanged, Corgi, Dinky, Railways, Tinplate, Sci Fi, etc. Tewkesbury Antique Centre, Tolsey Lane, GL20 5AE. Open Mon-Sat 10-4.30, Sun 11-4 5mins from M5 J9. Also at Big Red Barn, 29-31 Newerne St, Lydney GL15 4SD. Open Tues- Sat 10-5. Email: toymarts@outlook.com. Tel: **07973 768452**

KENT

KIT KRAZY Largest selection of plastic kits in UK from 1950s to date, plus much more. Collections bought or swapped. Email: steve@kitkrazy.com
303 The Broadway, Bexleyheath, Kent, DA6 8DT. T/F: **020 8298 7177**. W: www.kitkrazy.com

LANCASHIRE

BROOKS COLLECTABLES Toy Museum & Retro Arcade 7 Waterloo Road, Blackpool, Lancashire, FY4 1AF TEL **01253 344478** EMAIL sales@donkeyrides.co.uk Family run since 1949 buyers and sellers of vintage and modern toys, dinky and corgi collectables. Come and see our eclectic mix of toys, retro arcade machines and gifts. The shop is open 7 days Easter to November 5th, museum open Wednesday to Sunday 10 till 12 and 2 till 4.

NORTHERN IRELAND

MY OLD Toybox For collectable diecast and kits, Matchbox, Dinky, Corgi, Action Man, Star Wars, sci-fi, Subbuteo, etc. The Old Toybox, Unit 14, Smithfield Market, Belfast BT1 1JE. Tel: **07719 100483**

Email: james1gilliland@hotmail.com www.myoldtoyboxbelfast.co.uk

STAFFORDSHIRE

TUTBURY MODELS We buy and sell new and second-hand Model Railways including - Hornby, Wrenn, Triang, Marklin, Bachmann, Lima, Dapol, Farish, LGB, etc. Contact: Barry Tutbury, Mill Mews, Lower High Street, Tutbury, Nr. Burton-upon-Trent. Tel: **01283 814777**

WALES

COLWYN BAY - Clwyd Models Second hand Model Railways, Books, Videos, Diecast etc bought & sold. Open Times: Thurs, Fri, Sat only 10am-1pm & 2pm-5pm. 447 Abergele Rd, Old Colwyn, Conwy. Tel: **01492 518709** Email: clwydmodels@tiscali.co.uk

WEST MIDLANDS

SPRINGHILL MODELS and Cards Stockists of Corgi, C.M.C, IXO, Classix, Oxford Diecast, Greenlight, Whitebox, B-T Models and others. Contact: Pete Skilton, 4 Springhill Lane, Penn, Wolverhampton, W/ Mids, WV4 4SH. Tel: **01902 341302** Web: www.springhillmodels.co.uk Email: pete@springhillmodels.co.uk

WEST SUSSEX

Vintage Toys in Burgess Hill
Possibly the largest collection of quality models to view in the South East! Diecast, Tinplate, Lead Figures, Model Railway, Lego, Action Figures and so much more...At sensible prices! Rocking Horse Emporium 36 Martlets Shopping Centre Burgess Hill, West Sussex RH15 9NN Tel: **01444 244507**

YORKSHIRE

DALESMAN DIECAST Vast range of diecast models available, many at discounted prices. Collections and unwanted stock purchased for cash. Contact: Ken Hartshorne, Victoria Rd, Guiseley, Leeds, LS20 8DG Tel: **01943 873420** Email: info@dalesmandiecast.co.uk www.dalesmandiecast.co.uk

WANTED

WANTED: DINKY, CORGI, Matchbox, Lesney, Britains, Spot-on toys. Boxed or unboxed. Any amount and any condition considered. Also buy train items by Hornby, Bachmann, Tri-ang etc and old retro video games (Sega, Nintendo, Atari). Tv and film related merchandise also purchased. Cash paid and can collect in Devon, Cornwall, Dorset, Somerset, Hampshire, Wiltshire and other areas may be possible. Call Lee on: **07812 450680** or email: info@focustoys.co.uk

WANTED - VINTAGE FIREWORK Collector, Do not light the blue touch paper and burn British Heritage, private collector will pay cash and collect from anywhere, licensed explosive storage, call Tony on **07956 506300**

WANTED - ALL DIECAST- CORGI, DINKY, Spot On, Matchbox, Triang and Britain's Collections. Instant cash waiting. Immediate appraisals. Collect anywhere. Tel: Mike **07704 071568** anytime.

WANTED
COLLECTIONS OF DINKY, Corgi and other diecast cars, lorries and tractors etc, any condition, large or small collections, anything considered.
Tel: **01264 773018** or **07860 629009 (Hants)**

To advertise in the next issue of **Collectors Gazette** please call Kristina on **01778 392096** or email her at kristina.green@warnersgroup.co.uk

SALES & EXCHANGE FORM

Name.....

Address

..... Postcode

Tel:

Email

Only £25.00+VAT for 25 words (please send wording with this form). If you would like your advert to appear in a box or to include a photo please add £1.50. To include a Box No please add £2.50. Please make cheques/postal orders payable to Collectors Gazette. Alternatively please provide your credit/debit card details below

Please debit £_____ from my Visa Mastercard Maestro

Card No:

Expiry Date: Start Date: Issue No: Sec No:

Signature _____ Date _____

Conditions of Acceptance 1 Your full name, address and telephone number must be supplied for your advert to appear. 2 It is the responsibility of the reader to ensure the form is filled out correctly. Please ensure the form is completed in BLOCK CAPITALS. 3 Ensure that your advert is no more than 30 words including your location and telephone number. 4 The publishers accept no responsibility for the accuracy in Sales & Exchange and reserve the right to place adverts in the next available issue. 5 Adverts will only be accepted for goods up to £500. 6 The publishers accept no responsibility for transactions occurring from adverts published. 7 Any orders received cannot be amended or cancelled. 8 When sending goods through the post, please package carefully to avoid breakages. 9 Photocopies of this form are acceptable.

Great Fairs to Be At - Great Fairs to Buy At

STAFFORD SHOWGROUND

SUNDAY 17TH JUNE

10.30am - 3pm

THE PRESTON AND ARGYLE SUITES, STAFFORD COUNTY SHOWGROUND,
WESTON ROAD, STAFFORD, ST18 0BD

Situated on the A518 Stafford to Uttoxeter Road. Signposted from
Junction 14 of the M6 motorway. **Free parking.** Early Bird Entry from 8am £8.

Adults £4, Senior Citizens £3.50, Children £1

A GREAT WEST MIDLANDS TOY FAIR

300
STALLS



COVENTRY

SUNDAY 1ST JULY

10.30am - 3pm

THE CONNEXION, RYTON-ON-DUNSMORE, NR. COVENTRY, CV8 3FL.

The Connexion is just off the A45, with **Free Parking** for all visitors.

Early Bird Entry from 8am £6.

Adults £3, Senior Citizens £2.50, Children £1

HUNDREDS OF DIECAST MODELS FOR SALE

180
STALLS



DONCASTER RACECOURSE

SUNDAY 8TH JULY

10.30am - 3pm

DONCASTER EXHIBITION CENTRE, LEGER WAY, DONCASTER, DN2 6BB.

Easy motorway access from the M1, M18, M62 and A1(M). Follow the
brown racecourse signs. **Free Parking** for thousands of cars.

Early Bird Entry from 8am £10.

Adults £4, Senior Citizens £3.50, Children £1

ONE OF THE COUNTRY'S BEST FAIRS

MORE THAN
350
STALLS



STAFFORD SHOWGROUND

SUNDAY 2ND SEPTEMBER

10.30am - 3pm

THE PRESTON AND ARGYLE SUITES, STAFFORD COUNTY SHOWGROUND,
WESTON ROAD, STAFFORD, ST18 0BD

Situated on the A518 Stafford to Uttoxeter Road. Signposted from
Junction 14 of the M6 motorway. **Free parking.** Early Bird Entry from 8am £8.

Adults £4, Senior Citizens £3.50, Children £1

A GREAT WEST MIDLANDS TOY FAIR

300
STALLS



www.bpfairs.com Tel: 01604 846688 / 07966 527177

SELLING YOUR TOYS & MODELS?

Warwick and Warwick have an expanding requirement for toys and model collections, British and worldwide and for diecast models, trains/train sets, model soldiers and toys of individual value. Our customer base is increasing dramatically and we need an ever larger supply of quality material to keep pace with demand. The market has never been stronger and if you are considering the sale of your collection, now is the time to act.

FREE VALUATIONS

We will provide a free, professional and without obligation valuation of your collection. Either we will make you a fair, binding private treaty offer, or we will recommend inclusion of your property in our next specialist public auction.

FREE TRANSPORTATION

We can arrange insured transportation of your collection to our Warwick offices completely free of charge. If you decline our offer, we ask you to cover the return carriage costs only.

FREE VISITS

Visits by our valuers are possible anywhere in the country or abroad, in order to assess more valuable collections. Please phone for details.

ADVISORY DAYS

We are staging a series of advisory days and will be visiting the following towns within the next few weeks, **Stroud, Arundel, Farnham, Chester, Hull, Sheffield, Perth, Falkirk, Carlisle, Loughborough, Grays and Chelmsford.** Please visit our website or telephone for further details.

EXCELLENT PRICES

Because of the strength of our customer base we are in a position to offer prices that we feel sure will exceed your expectations.

ACT NOW

Telephone or email Richard Beale today with details of your property.



Warwick & Warwick Ltd.
Auctioneers and Valuers
Chalon House, Scar Bank, Millers Road,
Warwick CV34 5DB

Tel: 01926 499031 Fax: 01926 491906

E-mail: richard.beale@warwickandwarwick.com

www.warwickandwarwick.com



Warwick & Warwick